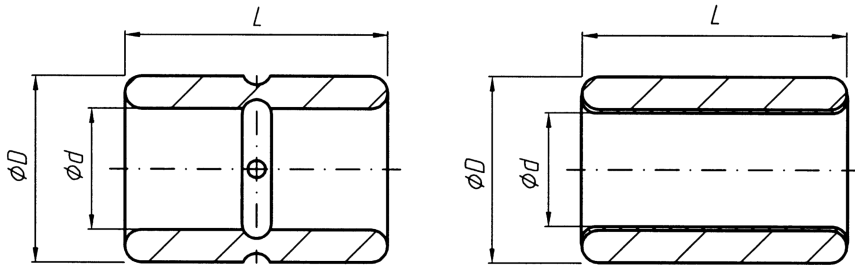
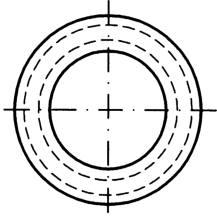


TWM Linear Ball Bushing

Compact Linear Slide Bushing

Linear Ball Bushings



Dimensions in mm

Part-No.	Ø d	tolerances		Ø D ^{h7}	L ^{h13}	L1	L2	weight (kg)
		+µ	* +µ					
L-06 TWM	6	10-28	60-78	12	22			0,006
L-08 TWM	8	13-35	63-85	15	24	14	2	0,007
L-10 TWM	10	13-35	63-85	17	26	16	2	0,009
L-12 TWM	12	16-43	66-93	19	28	18	2	0,011
L-14 TWM	14	16-43	66-93	21	28	18	2	0,013
L-16 TWM	16	16-43	66-93	24	30	18	2	0,018
L-20 TWM	20	20-53	96-129	28	30	18	2	0,023
L-25 TWM	25	20-53	96-129	35	40	28,4	3,2	0,044
L-30 TWM	30	20-53	90-129	40	50	36,4	3,2	0,065
L-40 TWM	40	25-64	127-166	52	60	48,2	4,1	0,123
L-50 TWM	50		127-166	62	70	58,2	4,1	0,177

* FMTC

calculation of load capacity

stat: max. surface pressure 1050 N/cm²

dyn: max. surface pressure 2150 N/cm² x m/min

Ordering code

L-	Ø-	TWM	SL
linear slide bushing	shaft diameter	Compact version	SL self lubricating
			Blank Ceramics