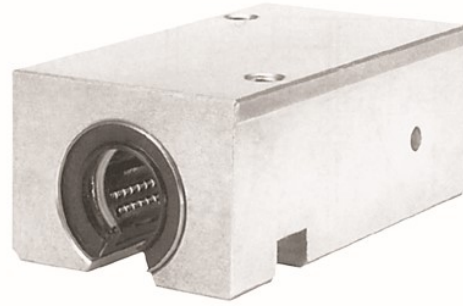
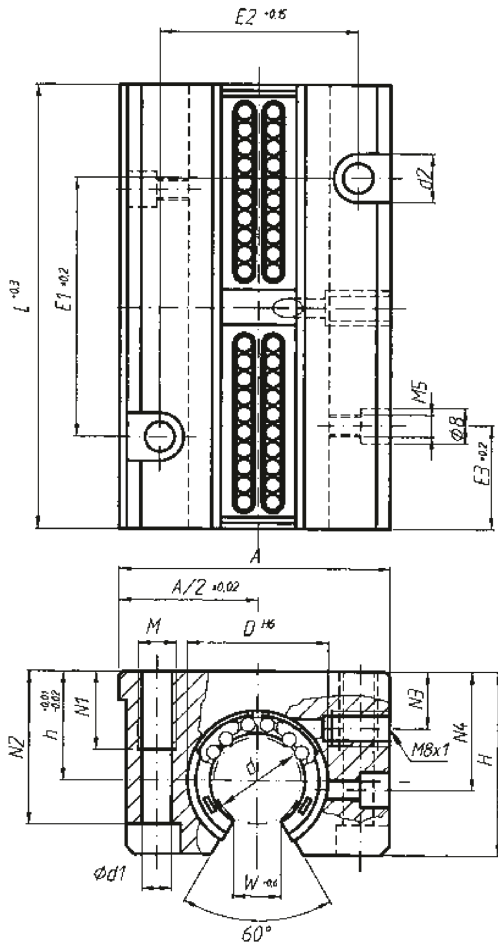


TAG-OP Linear Housing Unit



tandem open
integrated wipers on both ends
lubrication hole M8 x1

Linear Bearing Housings

Dimensions in mm

Part-No.	∅ d	∅ D	A	H	h	L	N1	N2	N3	N4	E1	E2	E3	∅ d1	d2	M	W	weight (kg)
TAG-OP-12	12	22	43	30	18	76	13	25	10	16,65	40	30	19,5	5,2	10	M6	7,0	0,22
TAG-OP-16	16	26	53	35	22	84	13	30	12	22,00	45	36	21,5	5,2	10	M6	9,4	0,34
TAG-OP-20	20	32	60	42	25	104	18	34	13	25,00	55	45	27,0	6,8	11	M8	10,2	0,62
TAG-OP-25	25	40	78	51	30	130	22	40	15	31,50	70	54	33,5	8,6	15	M10	12,9	1,17
TAG-OP-30	30	47	87	60	35	152	26	48	16	33,00	85	62	39,5	10,3	18	M12	14,4	1,68
TAG-OP-40	40	62	108	77	45	176	34	60	20	43,50	100	80	45	14,25	20	M16	18,2	3,15
TAG-OP-50	50	75	132	88	50	224	35	49	-	125	100	-	13,5	-	M16	22,5	5,5	
TAG-OP-60	60	90	178	118	69	278	40	100	-	90	130	-	17,5	26	M20	43	5,2	
TAG-OP-80	80	120	232	158	93	364	48	136	-	110	170	-	22	33	M24	61	11,5	

- load ratings according to the specification of the bearing (x 2)
- weight value considering the linear ball bushing, standard
- the bushings are secured in the housings by radial-axial-fixing screw
- fixing screws DIN 912 - 8.8, circlip DIN 7980

Ordering code

TAG-OP-	∅-	S-	V
linear housing, tandem, open	shaft diameter	S linear ball bushing, self-aligning, high load capacity (refer to page 25) K linear ball bushing, standard (refer to p. 20) V linear ball bushing, all-steel (refer to page 21) KS linear ball bushing, standard, self-aligning (refer to page 24) FM linear slide bushing, self-lubricating (ref. to p. 27) L linear slide bushing, ceramic	external front seal