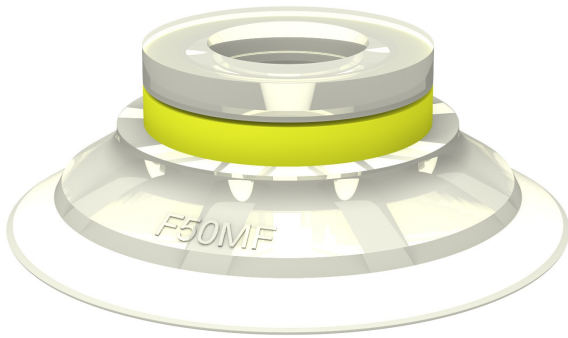


Suction cup F50MF Thermoelastic polyurethane, 0101143

- Suction cup of TPU, a mark free material that leaves no trace on the object being handled.
- Suitable for flat surfaces.
- Good stability and little inherent movement.
- Recommended when the lifting force is parallel to the surface of the object.



General

Curve radius	95 mm
Movement, vertical max.	2.2 mm
Application	Mark Free
Material	Thermoplastic Polyurethane (TPE-U)
Suction cup model	F-MF
Suction cup shape	Flat
Volume	10 cm ³
Weight	10 g

Fitting

Fitting size	None
Fitting style	None
Fitting type	None
Fitting option	None

Dimension

Height	17.5 mm
Outer diameter	53 mm
Outer diameter, actuated	54.6 mm

Performance — lifting forces

		
20 -kPa	24.5 N	31 N
60 -kPa	92 N	82 N
90 -kPa	141 N	107 N

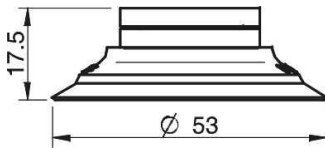
Material

	Thermoplastic Polyurethane (TPE-U)
Colour	White transparent
Hardness	81 °Shore A
Temperature	-20 – 80 °C

Material resistance

	Thermoplastic Polyurethane (TPE-U)
Alcohol	++
Concentrated acids	-
Ethanol	N/A
Hydrolysis	-
Methanol	N/A
Oil	+++
Oxidation	++
Petrol	-
Wear resistance	+++
Weather and ozone	+++

Dimensional drawings



Values specified in the data sheet are tested at:

Room temperature	(20°C [68°F] ± 3°C [5.5°F])
Standard atmosphere	(101.3 [29.9 inHg] ± 1.0 kPa [0.3 inHg])
Relative humidity	0-100%
Compressed air quality	DIN ISO 8573-1 class 4

Accessories

	Item no.
Fitting G3/8" male, 50, with mesh filter	3250087
Fitting G1/4" male, with mesh filter and dual flow control valve	3251013
Fitting G1/4" male, 50, with mesh filter	3250092
Fitting 5x1/8" NPSF female, 50, with dual flow control valve	3251017
Fitting 5x1/8" NPSF female, 50	0100262
Fitting 3/8" NPT male, with mesh filter	3250090
Fitting 3/8" NPT male, with dual flow control valve	3251016
Fitting 1/8" NPSF female, 50, with mesh filter	0101154
Fitting 1/8" NPSF female, 50, with dual flow control valve	3251012
Fitting 1/8" NPSF female, 50, PA	3150198
Fitting 1/8" NPSF female, 50	3250017
Fitting 1/4" NPT male, with mesh filter	3250094
Fitting 1/4" NPT male, with dual flow control valve	3251014
Fitting G3/8" male, 50, with mesh filter and dual flow control valve	3251015