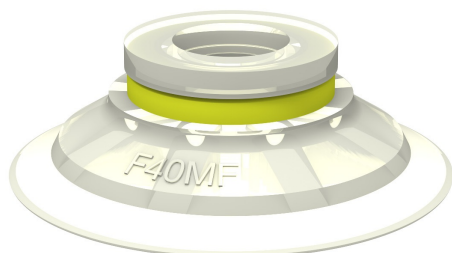


# Suction cup F40MF Thermoelastic polyurethane, 0101142

- Suction cup of TPU, a mark free material that leaves no trace on the object being handled.
- Suitable for flat surfaces.
- Good stability and little inherent movement.
- Recommended when the lifting force is parallel to the surface of the object.



## General

Curve radius	60 mm
Movement, vertical max.	1.8 mm
Application	Mark Free
Material	Thermoplastic Polyurethane (TPE-U)
Suction cup model	F-MF
Suction cup shape	Flat
Volume	4.8 cm <sup>3</sup>
Weight	6 g

## Fitting

Fitting size	None
Fitting style	None
Fitting type	None
Fitting option	None

## Dimension

Height	13 mm
Outer diameter	42 mm
Outer diameter, actuated	43.7 mm

## Performance — lifting forces

		
20 -kPa	18 N	16 N
60 -kPa	57 N	49 N
90 -kPa	83 N	57 N

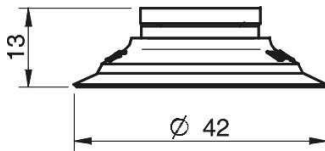
## Material

	Thermoplastic Polyurethane (TPE-U)
Colour	White transparent
Hardness	81 °Shore A
Temperature	-20 – 80 °C

## Material resistance

	Thermoplastic Polyurethane (TPE-U)
Alcohol	++
Concentrated acids	-
Ethanol	N/A
Hydrolysis	-
Methanol	N/A
Oil	+++
Oxidation	++
Petrol	-
Wear resistance	+++
Weather and ozone	+++

## Dimensional drawings



## Values specified in the data sheet are tested at:

Room temperature	(20°C [68°F] ± 3°C [5.5°F])
Standard atmosphere	(101.3 [29.9 inHg] ± 1.0 kPa [0.3 inHg])
Relative humidity	0-100%
Compressed air quality	DIN ISO 8573-1 class 4

## Accessories

	Item no.
Fitting G3/8" male, 30-40, with mesh filter	3250086
Fitting G3/8" male, 30-40, with mesh and dual flow control valve	3251009
Fitting G1/4" male, 30-40, with mesh filter and dual flow control valve	3251007
Fitting G1/4" male, 30-40, with mesh filter	3250091
Fitting 5x1/8" NPSF female, 30-40, with dual flow control valve	3251011
Fitting 5x1/8" NPSF female, 30-40	0100261
Fitting 3/8" NPT male, with mesh filter	3250089
Fitting 3/8" NPT male, with dual flow control valve	3251010
Fitting 1/8" NPSF female, 30-40, with mesh filter	0101153
Fitting 1/8" NPSF female, 30-40, with dual flow control valve	3251006
Fitting 1/8" NPSF female, 30-40, PA	3150197
Fitting 1/8" NPSF female, 30-40	3250005
Fitting 1/4" NPT male, with mesh filter	3250093
Fitting 1/4" NPT male, with dual flow control valve	3251008