

# Bellows suction cup S.B50SF50.XXX.00



- ▶ The lifting movement can be used to separate small and thin objects.
- ▶ Only lightweight objects should be handled when the lifting force is parallel to the surface of the object, in order to achieve good precision and safe lifting movement.
- ▶ Suitable for level adjustment. Several short bellows in one lifting device can handle objects with height differences and varying shapes, for example embossed or corrugated plates.
- ▶ The silicone material complies with FDA 21 CFR 177.2600 & EU 1935/2004.

## Lifting force

Description	Vertical			Parallel		
	20 -kPa	60 -kPa	90 -kPa	20 -kPa	60 -kPa	90 -kPa
Lifting forces	33.0 N	65.0 N	82.0 N	24.2 N	51.2 N	60.8 N

## Technical data

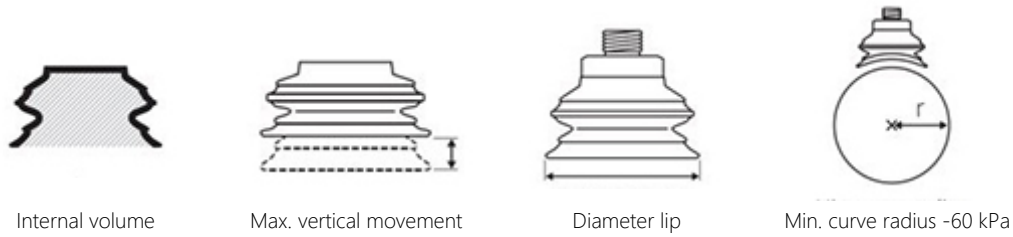
Description	Unit	Value
Internal volume	cm <sup>3</sup>	32.0
Weight	g	21
Min. curve radius -60 kPa	mm	30.0
Max. vertical movement	mm	18.2
Application	-	Food contact materials (FDA & EU), non-detectable,
Material	-	Silicone (SIL FDA)
Colour	-	Transparent
Suction cup model	-	B
Suction cup shape	-	Bellows
Hardness °Shore A	-	50 °Shore A
Temperature range (°C)	°C	-40 – 200
Actuated outer diameter, Max	mm	60.5

## Material resistance , Silicone FDA, SIL FDA

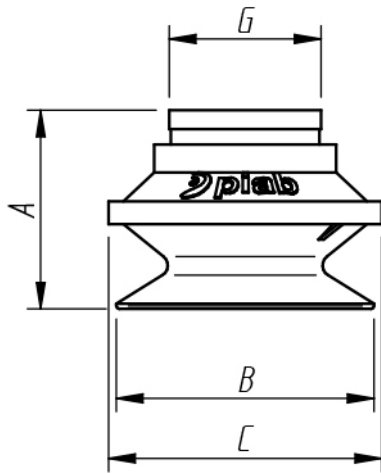
Description	Value
Alcohol	Good
Concentrated Acids	Poor
Ethanol	N/A
Hydrolysis	Fair
Methanol	N/A
Oil	Poor
Oxidation	Excellent
Petrol	Poor
Wear Resistance	Good
Weather & Ozone	Excellent

Values specified in data sheet are tested at:

- Room temperature (20°C [68°F] ± 3°C [5.5°F]).
- Standard atmosphere (101.3 [29.9 inHg] ± 1.0 kPa [0.3 inHg]).
- Relative humidity 20-70%.
- Compressed air quality, DIN ISO 8573-1 class 4.



### Dimensional drawing



Product code	Description	Unit	Value
A	Building height	mm [inch]	35.3 [1.39"]
B	Diameter lip	mm [inch]	53.0 [2.09"]
C	Diameter (bellow)	mm [inch]	58.0 [2.28"]
G	Diameter (upper part cup)	mm [inch]	27.0 [1.06"]

### Ordering information

Description	Product code
<b>Bellows suction cup</b> , Ø 50mm, Silicone FDA, SIL FDA, 50 °Shore A, None, None, None, None	S.B50SF50.XXX.00

### Ordering information, spare parts

Description	Art. No.
Suction cup B50 Silicone FCM	0200409

## Ordering information, accessories

Description	Art. No.
Fitting 1/8" NPSF female, 50	3250017
Fitting 1/8" NPSF female, 50, with mesh filter	0101154
Fitting 1/8" NPSF female, 50, with dual flow control valve	3251012
Fitting 1/8" NPSF female, 50, with cone valve	0101157
Fitting 1/8" NPSF female, 50, PA	3150198
Fitting G1/4" male, 50, with mesh filter	3250092
Fitting G1/4" male, with mesh filter and dual flow control valve	3251013
Fitting G3/8" male, 50, with mesh filter	3250087
Fitting G3/8" male, 50, with mesh filter and dual flow control valve	3251015
Fitting 5x1/8" NPSF female, 50	0100262
Fitting 5x1/8" NPSF female, 50, with dual flow control valve	3251017
Fitting 1/4" NPT male, with mesh filter	3250094
Fitting 3/8" NPT male, with mesh filter	3250090
Fitting 1/4" NPT male, with dual flow control valve	3251014
Fitting 3/8" NPT male, with dual flow control valve	3251016
Fitting G1/8" male, 50, with mesh filter	0200715
Fitting 50 05XX no filter	0129347
Suction cup B50 Silicone	0101108
Suction cup B50 Nitrile-PVC	0101107
Suction cup B50 HNBR	0108165
Suction cup B50MF Thermoelastic polyurethane	0101114