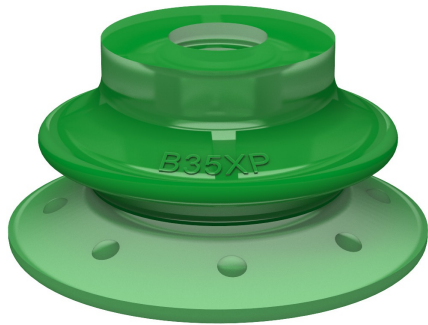


Suction cup B35XP Polyurethane 60, 0205192



- Suitable for limited level adjustment with good stability.
- Excellent gripping performance on corrugated and porous or surface leaking objects such as cardboard, textured plastic parts and composite material (raw surface)
- In the two-coloured suction cup the bellows and the sealing lip are of different hardnesses, which makes the suction cup strong and stable for accelerations and speed, at the same time, soft and flexible.
- DURAFLEX® suction cups manufactured in a specially developed material that features the elasticity of rubber and wear resistance of polyurethane.
- The material DURAFLEX® is mark free.

General

| | |
|-------------------------|---------------------------------|
| Curve radius | 17.5 mm |
| Movement, vertical max. | 9.5 mm |
| Application | Glass handling, Dry sheet metal |
| Material | Polyurethane (PU60) |
| Suction cup model | B-XP |
| Suction cup shape | Bellows |
| Volume | 4.4 cm ³ |
| Weight | 6.6 g |

Fitting

| | |
|----------------|------|
| Fitting size | None |
| Fitting style | None |
| Fitting type | None |
| Fitting option | None |

Dimension

| | |
|----------------|---------|
| Height | 18.6 mm |
| Outer diameter | 37 mm |

Performance — lifting forces

| |  |  |
|---------|---|---|
| 20 -kPa | 19 N | 17 N |
| 60 -kPa | 48 N | 33 N |
| 90 -kPa | 66 N | 50 N |

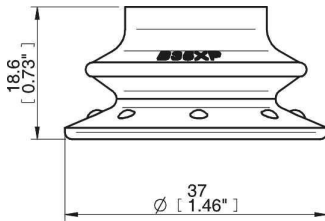
Material

| | |
|-------------|---------------------|
| | Polyurethane (PU60) |
| Colour | Green transparent |
| Hardness | 60 °Shore A |
| Temperature | 10 – 50 °C |

Material resistance

| | Polyurethane (PU60) |
|--------------------|---------------------|
| Alcohol | N/A |
| Concentrated acids | + |
| Ethanol | + |
| Hydrolysis | + |
| Methanol | - |
| Oil | +++ |
| Oxidation | - |
| Petrol | + |
| Wear resistance | +++ |
| Weather and ozone | +++ |

Dimensional drawings



Values specified in the data sheet are tested at:

| | |
|------------------------|--|
| Room temperature | (20°C [68°F] ± 3°C [5.5°F]) |
| Standard atmosphere | (101.3 [29.9 inHg] ± 1.0 kPa [0.3 inHg]) |
| Relative humidity | 0-100% |
| Compressed air quality | DIN ISO 8573-1 class 4 |

Accessories

| | Item no. |
|---|----------|
| Fitting 1/4" NPT male, with mesh filter | 3250093 |
| Fitting G1/4" male, 30-40, with mesh filter | 3250091 |
| Fitting 3/8" NPT male, with mesh filter | 3250089 |
| Fitting G3/8" male, 30-40, with mesh filter | 3250086 |
| Fitting G1/8" male, 40, with mesh filter | 0200714 |
| Fitting 1/8" NPSF female, 30-40, with mesh filter | 0101153 |