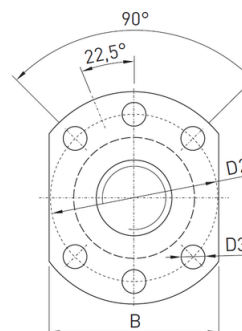
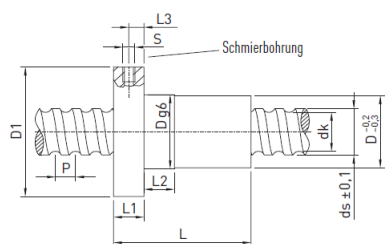


Nut designation R25-10K4-FSCDIN



Configuration attributes: R25-10K4-FSCDIN-4500-4500-0,052

type of spindle		rolled
nominal diameter in mm		25
lead		10
path deviation in μm		52 μm / 300 mm
Nut assembly		With axial play 0,04 mm assembled

Nut designation R25-10K4-FSCDIN / Spindle designation R25-10-4500-4500-0,052

Spindle diameter	ds	24,5	mm
lead	P	10	mm
Nut diameter	D_{g6}	40	mm
External flange diameter	D1	62	mm
Centring diameter	D2	51	mm
Hole diameter	D3	6,6	mm
Hole pattern		1	
Nut length	L	61	mm
Flange width	L1	10	mm
Fit length	L2	16	mm
Lubrication hole distance	L3	5	mm
Lubrication hole	S	M6	mm
Flange width	B	48	mm
Core diameter	dk	21,8	mm
Dynamic load rating	C_{dyn}	16.100	N
Static load rating	C₀	44.900	N
Axial play		0,04	mm
Mass		0,43	kg/St.

Specifications for your order:

R25-10K4-FSCDIN-4500-4500-0,052

E1: -

E2: -