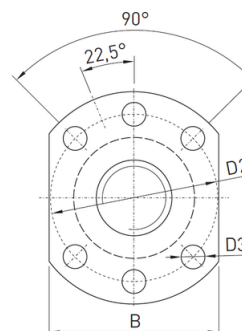
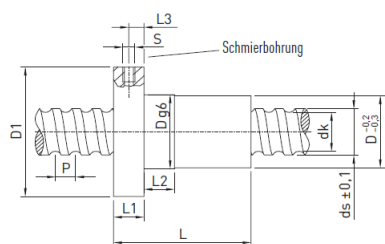


Nut designation R20-10K3-FSCDIN



Configuration attributes: R20-10K3-FSCDIN-3000-3000-0,052

type of spindle		rolled
nominal diameter in mm		20
lead		10
path deviation in μm		52 μm / 300 mm
Nut assembly		With axial play 0,04 mm assembled

Nut designation R20-10K3-FSCDIN / Spindle designation R20-10-3000-3000-0,052

Spindle diameter	ds	19,3	mm
lead	P	10	mm
Nut diameter	D_{g6}	36	mm
External flange diameter	D1	58	mm
Centring diameter	D2	47	mm
Hole diameter	D3	6,6	mm
Hole pattern		1	
Nut length	L	48	mm
Flange width	L1	10	mm
Fit length	L2	10	mm
Lubrication hole distance	L3	5	mm
Lubrication hole	S	M6	mm
Flange width	B	44	mm
Core diameter	dk	16,6	mm
Dynamic load rating	C_{dyn}	10.000	N
Static load rating	C₀	23.500	N
Axial play		0,04	mm
Mass		0,32	kg/St.

Specifications for your order:

R20-10K3-FSCDIN-3000-3000-0,052

E1: -

E2: -