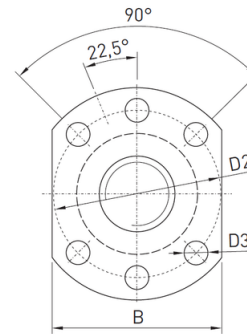
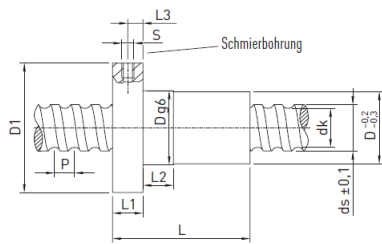


Nut designation R16-05T3-FSIDIN



Configuration attributes: R16-05T3-FSIDIN-3000-3000-0,052

type of spindle		rolled
nominal diameter in mm		16
lead		5
path deviation in µm		52 µm/ 300 mm
Nut assembly		With axial play 0,04 mm assembled

Nut designation R16-05T3-FSIDIN / Spindle designation R16-05-3000-3000-0,052

Spindle diameter	ds	15,5	mm
lead	P	5	mm
Nut diameter	D_{g6}	28	mm
External flange diameter	D1	48	mm
Centring diameter	D2	38	mm
Hole diameter	D3	5,5	mm
Hole pattern		1	
Nut length	L	40	mm
Flange width	L1	10	mm
Fit length	L2	10	mm
Lubrication hole distance	L3	5	mm
Lubrication hole	S	M6	mm
Flange width	B	40	mm
Core diameter	dk	12,9	mm
Dynamic load rating	C_{dyn}	6.500	N
Static load rating	C₀	11.700	N
Axial play		0,04	mm
Mass		0,18	kg/St.

Specifications for your order:

R16-05T3-FSIDIN-3000-3000-0,052

E1: -

E2: -