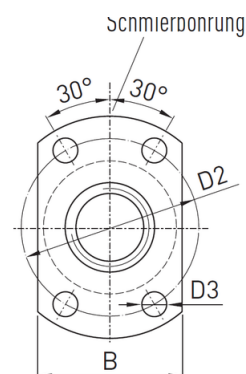
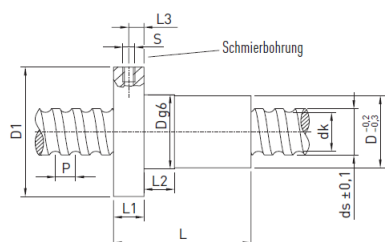


Nut designation R12-05K4-FSCDIN



Configuration attributes: R12-05K4-FSCDIN-1500-1500-0,052

type of spindle		rolled
nominal diameter in mm		12
lead		5
path deviation in µm		52 µm/ 300 mm
Nut assembly		With axial play 0,02 mm assembled

Nut designation R12-05K4-FSCDIN / Spindle designation R12-05-1500-1500-0,052

Spindle diameter	ds	11,7	mm
lead	P	5	mm
Nut diameter	D_{g6}	24	mm
External flange diameter	D1	40	mm
Centring diameter	D2	32	mm
Hole diameter	D3	4,5	mm
Hole pattern		0	
Nut length	L	33	mm
Flange width	L1	8	mm
Fit length	L2	8	mm
Lubrication hole distance	L3	4	mm
Lubrication hole	S	M3	mm
Flange width	B	26	mm
Core diameter	dk	9,9	mm
Dynamic load rating	C_{dyn}	5.500	N
Static load rating	C₀	12.000	N
Axial play		0,02	mm
Mass		0,11	kg/St.

Specifications for your order:

R12-05K4-FSCDIN-1500-1500-0,052

E1: -

E2: -