

BONDY

INDUSTRIAL EQUIPMENT SUPPLIER

Piab piBASIC Vacuum Pumps

For ordering and questions call

(+45) 70 15 14 14

piBASIC 100 with central exhaust Si32-3 x 4

Article number: 0206756



- COAX® patented technology
- Side mounted for low building heights
- Possible to connect with central exhaust
- High vacuum flow
- Compact size and low weight
- Modular design

Technical data

Description	Unit	Value
Material	-	Al. Cu. CuZn. NBR (FKM). PA. POM. SS. Zn
Temperature, max.	°C	60
Temperature, min.	°C	0
Weight, min.	g	6500
Feed pressure, max.	MPa	0.7
Noise level, max.	dBA	69
Feed pressure, optimum, max.	MPa	0.6
Feed pressure, optimum, min.	MPa	0.4
Vacuum, max.	-kPa	65
Vacuum, min.	-kPa	75
Noise level, reduction	dBA	77

Performance

Ejector specification	Feed pressure MPa	Air consumption Nl/s	Vacuum flow (Nl/s) at different vacuum levels (-kPa)								Max vacuum -kPa
			0	10	20	30	40	50	60	70	
piBASIC100	0.4	5	20	11.6	7.6	4.8	3.2	1.6	0.4	0	≥60
piBASIC100	0.5	6	22.8	13.2	8.8	5.6	3.4	2.5	1.4	0.72	≥70
piBASIC100	0.6	7	24	14	10.4	6.8	3.6	2.4	2	1.4	≥75

piBASIC 200 with central exhaust Si32-3 x 8

Article number: 0207813



- COAX® patented technology
- Side mounted for low building heights
- Possible to connect with central exhaust
- High vacuum flow
- Compact size and low weight
- Modular design

Technical data

Description	Unit	Value
Material	-	Al. Cu. CuZn. NBR (FKM). PA. POM. SS. Zn
Temperature, max.	°C	60
Temperature, min.	°C	0
Weight, min.	g	6530
Feed pressure, max.	MPa	0.7
Noise level, max.	dBA	69
Feed pressure, optimum, max.	MPa	0.6
Feed pressure, optimum, min.	MPa	0.4
Vacuum, max.	-kPa	65
Vacuum, min.	-kPa	75
Noise level, reduction	dBA	77

Performance

Ejector specification	Feed pressure MPa	Air consumption Nl/s	Vacuum flow (Nl/s) at different vacuum levels (-kPa)								Max vacuum -kPa
			0	10	20	30	40	50	60	70	
piBASIC200	0.4	10	40	23.2	15.2	9.6	6.4	3.2	0.8	0	≥60
piBASIC200	0.5	12	46	26	17.6	11.2	6.8	5	2.8	1.4	≥70
piBASIC200	0.6	14	48	28	20.8	13.6	7.2	4.8	4	2.8	≥75

piBASIC 400 with central exhaust Si32-3 x 16

Article number: 0207814



- COAX® patented technology
- Side mounted for low building heights
- Possible to connect with central exhaust
- High vacuum flow
- Compact size and low weight
- Modular design

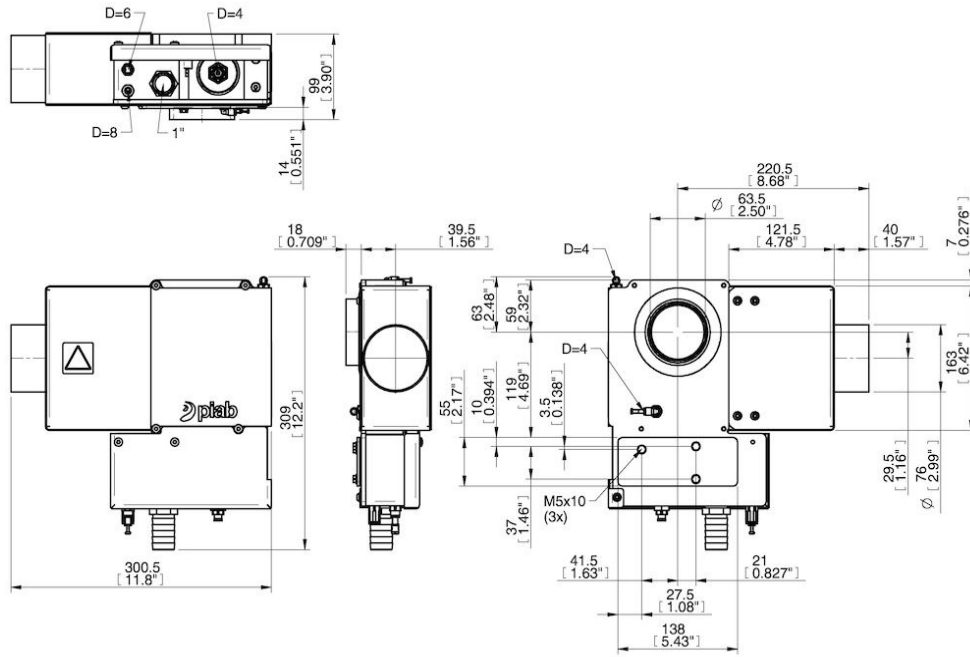
Technical data

Description	Unit	Value
Material	-	Al. Cu. CuZn. NBR (FKM). PA. POM. SS. Zn
Temperature, max.	°C	60
Temperature, min.	°C	0
Weight, min.	g	6590
Feed pressure, max.	MPa	0.7
Noise level, max.	dBA	69
Feed pressure, optimum, max.	MPa	0.6
Feed pressure, optimum, min.	MPa	0.4
Vacuum, max.	-kPa	65
Vacuum, min.	-kPa	75
Noise level, reduction	dBA	77

Performance

Ejector specification	Feed pressure MPa	Air consumption Nl/s	Vacuum flow (Nl/s) at different vacuum levels (-kPa)								Max vacuum -kPa
			0	10	20	30	40	50	60	70	
piBASIC400	0.4	20	68	43	30	19.2	12.8	6.4	1.6	0	≥60
piBASIC400	0.5	24	78	48	35	22.4	13.6	9.9	5.6	2.9	≥70
piBASIC400	0.6	28	82	51	42	27	14.4	9.6	8	5.6	≥75

Dimensional drawings



Values specified in this datasheet are tested at (unless otherwise stated):

- Room temperature (20°C [68°F] ± 3°C [5.5°F]).
- Standard atmosphere (101.3 [29.9 inHg] ± 1.0 kPa [0.3 inHg]).
- Compressed air quality, DIN ISO 8573-1 class 4.

Tolerance and accuracy:

- Feed pressure tolerance ±0.02 MPa [2.9 psi]
- Vacuum flow/evacuation time accuracy ±10%.

piBASIC 600 with central exhaust Si32-3 x 21

Article number: 0207815



- COAX® patented technology
- Side mounted for low building heights
- Possible to connect with central exhaust
- High vacuum flow
- Compact size and low weight
- Modular design

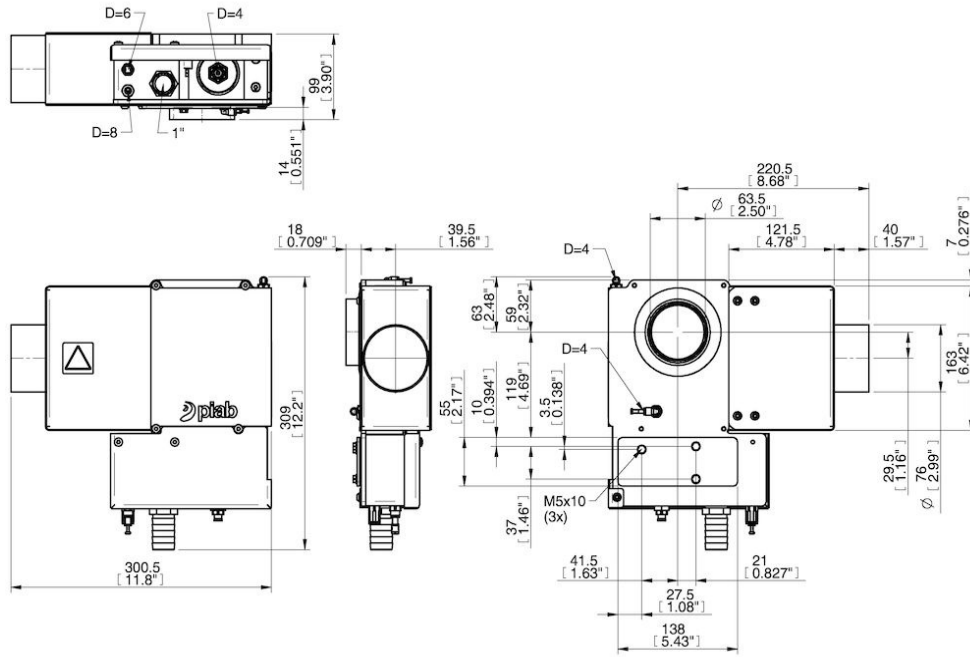
Technical data

Description	Unit	Value
Material	-	Al. Cu. CuZn. NBR (FKM). PA. POM. SS. Zn
Temperature, max.	°C	60
Temperature, min.	°C	0
Weight, min.	g	6630
Feed pressure, max.	MPa	0.7
Noise level, max.	dBA	69
Feed pressure, optimum, max.	MPa	0.6
Feed pressure, optimum, min.	MPa	0.4
Vacuum, max.	-kPa	65
Vacuum, min.	-kPa	75
Noise level, reduction	dBA	77

Performance

Ejector specification	Feed pressure MPa	Air consumption Nl/s	Vacuum flow (Nl/s) at different vacuum levels (-kPa)								Max vacuum -kPa
			0	10	20	30	40	50	60	70	
piBASIC600	0.4	26	89	56	40	25	16.8	8.4	2.1	0	≥60
piBASIC600	0.5	32	96	61	46	29	17.9	13	7.4	3.8	≥70
piBASIC600	0.6	36.6	101	65	55	36	18.9	12.6	10.5	7.4	≥75

Dimensional drawings



Values specified in this datasheet are tested at (unless otherwise stated):

- Room temperature (20°C [68°F] ± 3°C [5.5°F]).
- Standard atmosphere (101.3 [29.9 inHg] ± 1.0 kPa [0.3 inHg]).
- Compressed air quality, DIN ISO 8573-1 class 4.

Tolerance and accuracy:

- Feed pressure tolerance ±0.02 MPa [2.9 psi]
- Vacuum flow/evacuation time accuracy ±10%.

Datasheet

piBASIC 100 with central exhaust Mk3 for volume 28L

Article number: 0224325

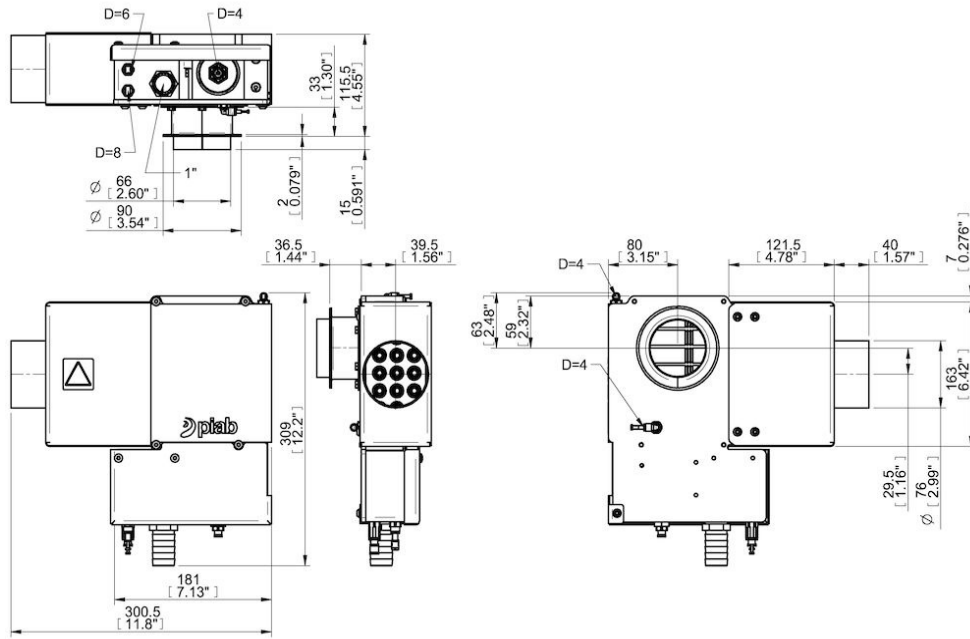


- COAX® patented technology
- Side mounted for low building heights
- Possible to connect with central exhaust
- High vacuum flow
- Compact size and low weight
- Modular design

Technical data

Description	Unit	Value
Material	-	Al. Cu. CuZn. NBR (FKM). PA. POM. SS. Zn
Temperature, max.	°C	60
Temperature, min.	°C	0
Weight, min.	g	6500
Feed pressure, max.	MPa	0.7
Noise level, max.	dBA	69
Feed pressure, optimum, max.	MPa	0.6
Feed pressure, optimum, min.	MPa	0.4
Vacuum, max.	-kPa	60
Vacuum, min.	-kPa	75
Noise level, reduction	dBA	77

Dimensional drawings



piBASIC 200 with central exhaust Mk3 for volume 28L

Article number: 0224356

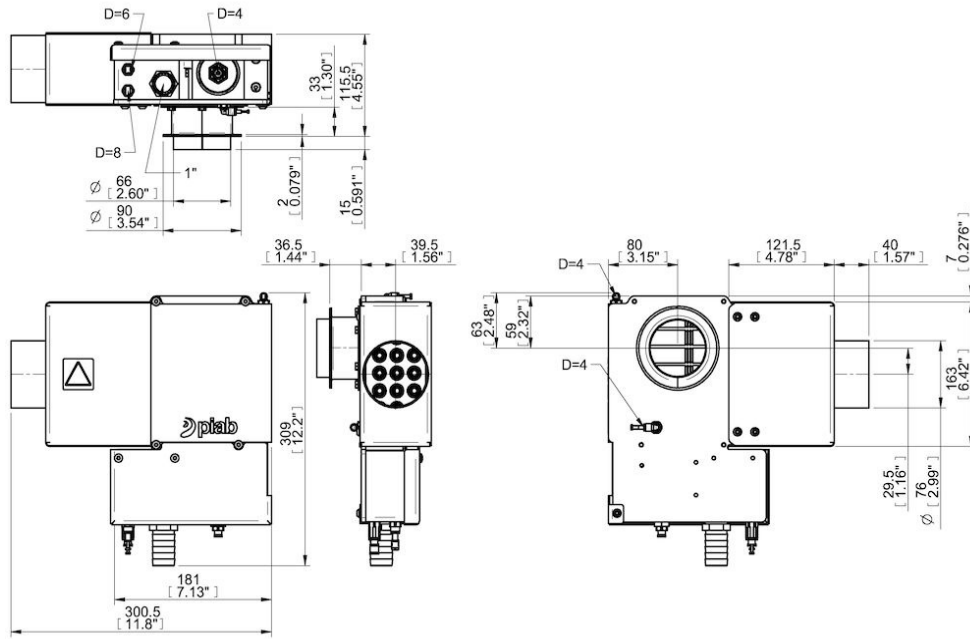


- COAX® patented technology
- Side mounted for low building heights
- Possible to connect with central exhaust
- High vacuum flow
- Compact size and low weight
- Modular design

Technical data

Description	Unit	Value
Material	-	Al. Cu. CuZn. NBR (FKM). PA. POM. SS. Zn
Temperature, max.	°C	60
Temperature, min.	°C	0
Weight, min.	g	6530
Feed pressure, max.	MPa	0.7
Noise level, max.	dBA	69
Feed pressure, optimum, max.	MPa	0.6
Feed pressure, optimum, min.	MPa	0.4
Vacuum, max.	-kPa	60
Vacuum, min.	-kPa	75
Noise level, reduction	dBA	77

Dimensional drawings



piBASIC 400 with central exhaust Mk3 for volume 28L

Article number: 0224357

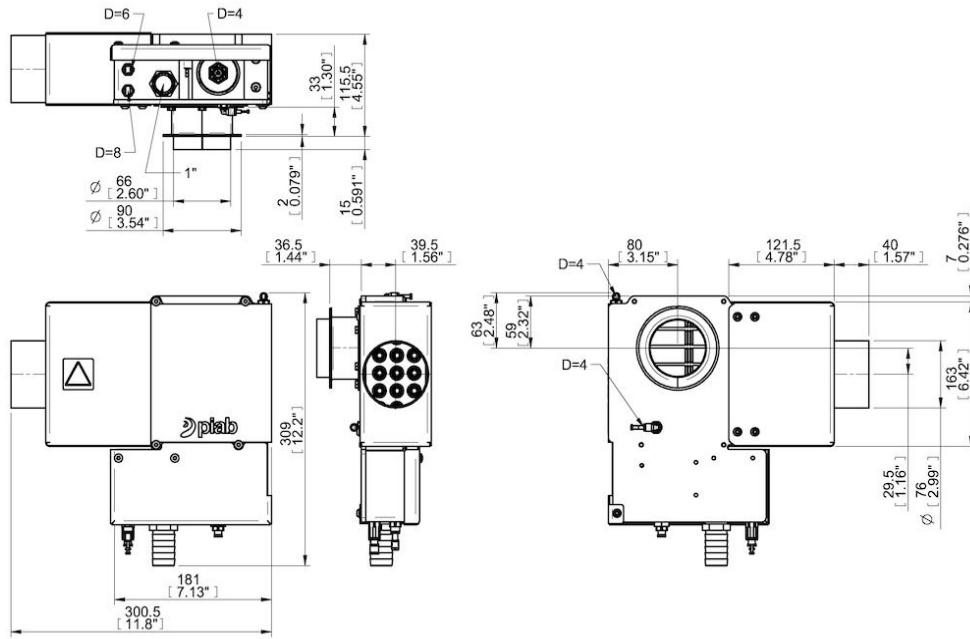


- COAX® patented technology
- Side mounted for low building heights
- Possible to connect with central exhaust
- High vacuum flow
- Compact size and low weight
- Modular design

Technical data

Description	Unit	Value
Material	-	Al. Cu. CuZn. NBR (FKM). PA. POM. SS. Zn
Temperature, max.	°C	60
Temperature, min.	°C	0
Weight, min.	g	6590
Feed pressure, max.	MPa	0.7
Noise level, max.	dBA	69
Feed pressure, optimum, max.	MPa	0.6
Feed pressure, optimum, min.	MPa	0.4
Vacuum, max.	-kPa	60
Vacuum, min.	-kPa	75
Noise level, reduction	dBA	77

Dimensional drawings



piBASIC 600 with central exhaust Mk3 for volume 28L

Article number: 0224358

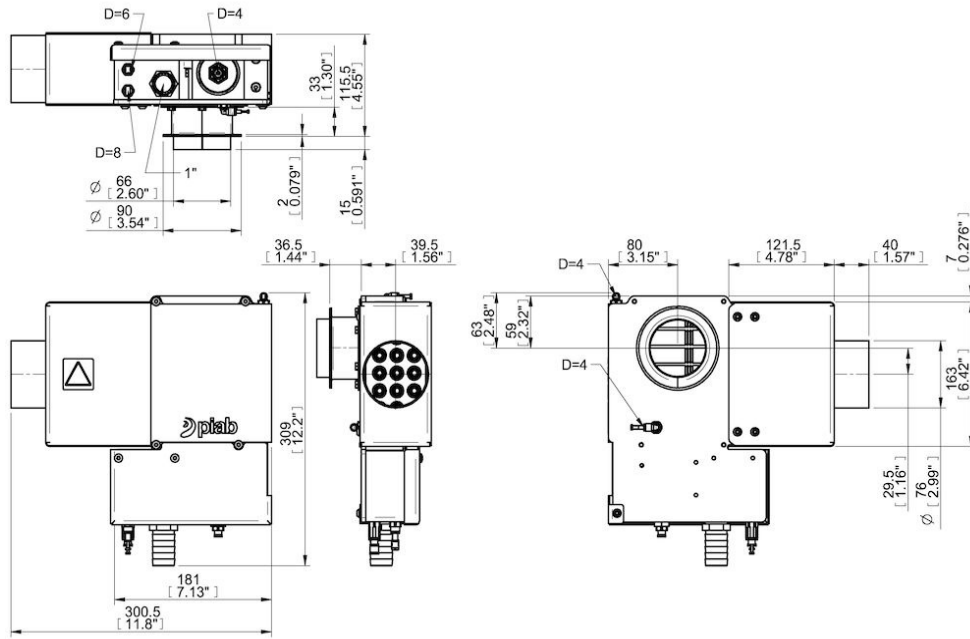


- COAX® patented technology
- Side mounted for low building heights
- Possible to connect with central exhaust
- High vacuum flow
- Compact size and low weight
- Modular design

Technical data

Description	Unit	Value
Material	-	Al. Cu. CuZn. NBR (FKM). PA. POM. SS. Zn
Temperature, max.	°C	60
Temperature, min.	°C	0
Weight, min.	g	6630
Feed pressure, max.	MPa	0.7
Noise level, max.	dBA	69
Feed pressure, optimum, max.	MPa	0.6
Feed pressure, optimum, min.	MPa	0.4
Vacuum, max.	-kPa	60
Vacuum, min.	-kPa	75
Noise level, reduction	dBA	77

Dimensional drawings



BONDY

INDUSTRIAL EQUIPMENT SUPPLIER



Transmission



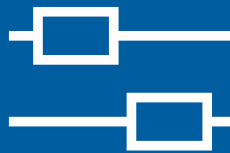
Handling



Motor & Gear



Vacuum Conveying



Linear



Support

See our products and solutions at

www.bondy.dk

For ordering and questions call (+45) 70 15 14 14