

BONDY

INDUSTRIAL EQUIPMENT SUPPLIER

Piab Vane Vacuum Pumps

For ordering and questions call

(+45) 70 15 14 14

Vane pump 200 IE3 400V

Article number: 0209779



- Electro mechanical generated vacuum
- High vacuum flow.
- Integrated inlet filter and control valves
- Oil-free
- Vibration stable

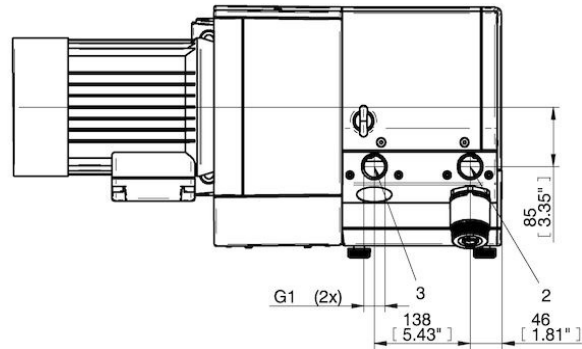
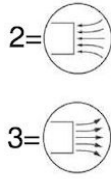
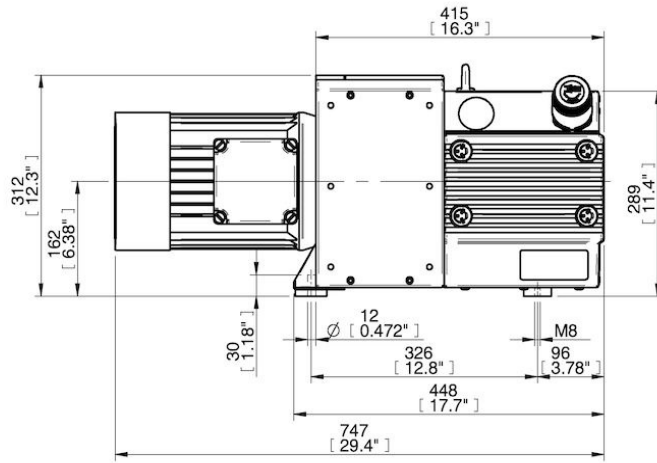
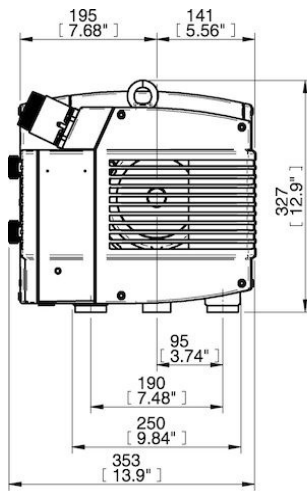
Technical data

Description	Unit	Value
Material	-	Iron FE
Weight, max.	g	86000
Electric connection	-	3AC 400V 50Hz
Noise level, max.	dBA	72
Rated Power (50Hz)	kW	2.4

Performance

Ejector specification	Feed pressure MPa	Air consumption Nl/s	Vacuum flow (Nl/s) at different vacuum levels (-kPa)										Max vacuum -kPa
			0	10	20	30	40	50	60	70	80	≥90	
Vane pump 200 50Hz	0	0	18.6	16.5	14.5	12.4	10.3	8.3	6.2	4.1	2.1	≥90	

Dimensional drawings



Values specified in this datasheet are tested at (unless otherwise stated):

- Room temperature (20°C [68°F] ± 3°C [5.5°F]).
- Standard atmosphere (101.3 [29.9 inHg] ± 1.0 kPa [0.3 inHg]).
- Compressed air quality, DIN ISO 8573-1 class 4.

Tolerance and accuracy:

- Feed pressure tolerance ±0.02 MPa [2.9 psi]
- Vacuum flow/evacuation time accuracy ±10%.

Accessories

0205864 | Hose connection kit 200

0205949 | Hose connection kit G1" - D=63

Vane pump 200 IE3 460V, 208V,230V

Article number: 0209780



- Electro mechanical generated vacuum
- High vacuum flow.
- Integrated inlet filter and control valves
- Oil-free
- Vibration stable

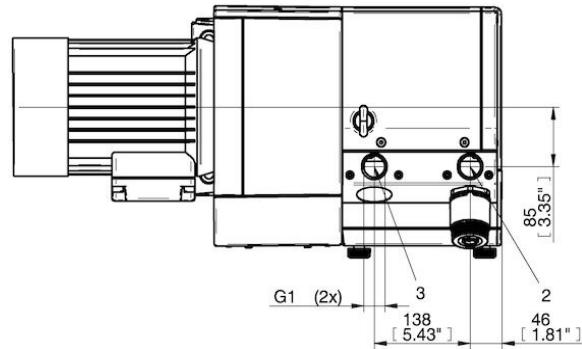
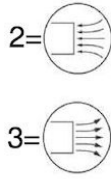
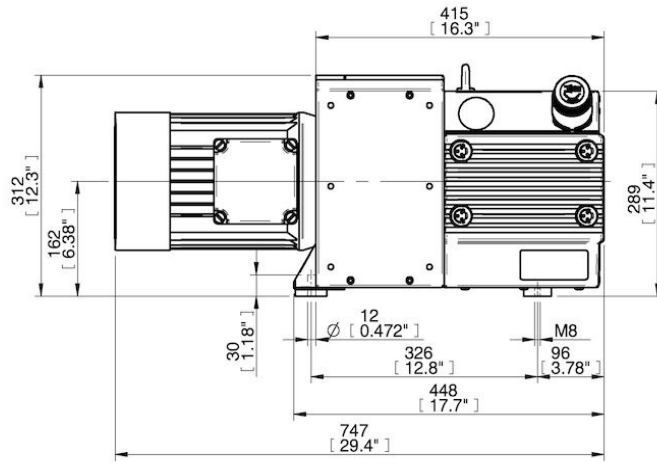
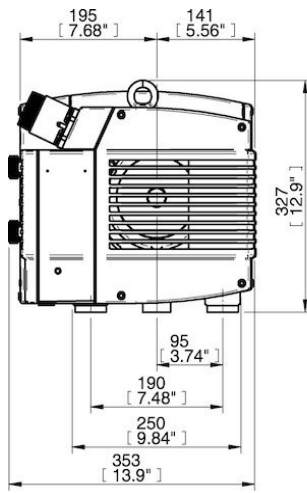
Technical data

Description	Unit	Value
Material	-	Iron FE
Weight, max.	g	86000
Electric connection	-	3AC 460V 60Hz. 3AC 208V 60Hz. 3AC 230V 60Hz
Noise level, max.	dBA	75
Rated Power (60Hz)	kW	3

Performance

Ejector specification	Feed pressure MPa	Air consumption NI/s	Vacuum flow (NI/s) at different vacuum levels (-kPa)										Max vacuum -kPa
			0	10	20	30	40	50	60	70	80	≥90	
Vane pump 200 60Hz	0	0	21.8	19.4	17	14.5	12.1	9.7	7.3	4.8	2.4	≥90	

Dimensional drawings



Values specified in this datasheet are tested at (unless otherwise stated):

- Room temperature (20°C [68°F] ± 3°C [5.5°F]).
- Standard atmosphere (101.3 [29.9 inHg] ± 1.0 kPa [0.3 inHg]).
- Compressed air quality, DIN ISO 8573-1 class 4.

Tolerance and accuracy:

- Feed pressure tolerance ±0.02 MPa [2.9 psi]
- Vacuum flow/evacuation time accuracy ±10%.

Accessories

0205864 | Hose connection kit 200

0205949 | Hose connection kit G1" - D=63

Vane pump 200 IE3 200V, 220V, 380V

Article number: 0209781



- Electro mechanical generated vacuum
- High vacuum flow.
- Integrated inlet filter and control valves
- Oil-free
- Vibration stable

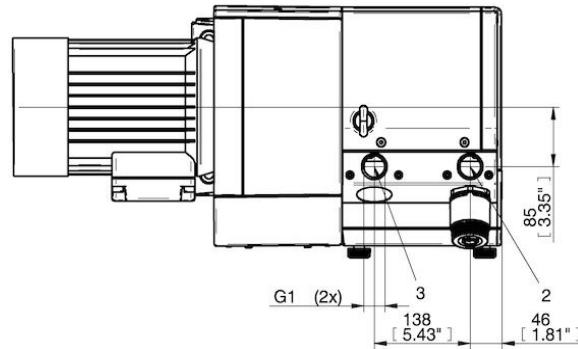
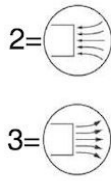
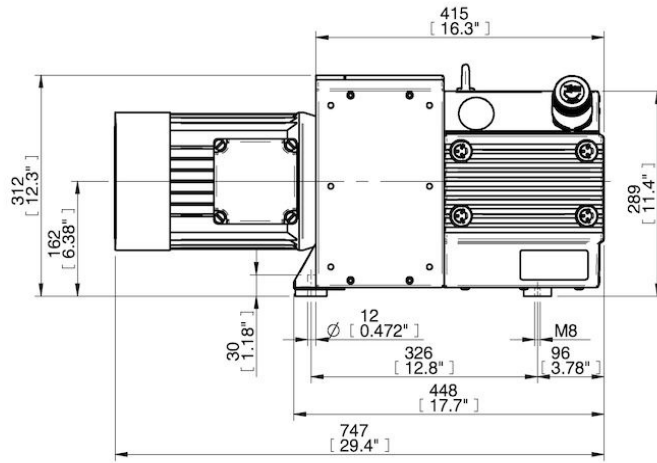
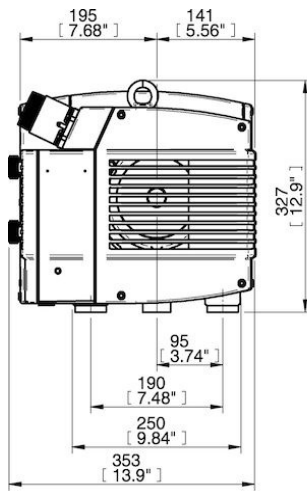
Technical data

Description	Unit	Value
Material	-	Iron FE
Weight, max.	g	86000
Electric connection	-	3AC 200V 50/60Hz. 3AC 220V 60Hz. 3AC 380V 60Hz
Noise level, max.	dBA	75
Noise level, min.	dBA	72
Rated Power (50Hz)	kW	2.4
Rated Power (60Hz)	kW	3

Performance

Ejector specification	Feed pressure MPa	Air consumption Nl/s	Vacuum flow (Nl/s) at different vacuum levels (-kPa)										Max vacuum -kPa
			0	10	20	30	40	50	60	70	80	90	
Vane pump 200 50Hz	0	0	18.6	16.5	14.5	12.4	10.3	8.3	6.2	4.1	2.1	≥90	
Vane pump 200 60Hz	0	0	21.8	19.4	17	14.5	12.1	9.7	7.3	4.8	2.4	≥90	

Dimensional drawings



Values specified in this datasheet are tested at (unless otherwise stated):

- Room temperature (20°C [68°F] ± 3°C [5.5°F]).
- Standard atmosphere (101.3 [29.9 inHg] ± 1.0 kPa [0.3 inHg]).
- Compressed air quality, DIN ISO 8573-1 class 4.

Tolerance and accuracy:

- Feed pressure tolerance ±0.02 MPa [2.9 psi]
- Vacuum flow/evacuation time accuracy ±10%.

Accessories

0205864 | Hose connection kit 200

0205949 | Hose connection kit G1" - D=63

Vane pump 400 IE3 200V, 220V, 380V

Article number: 0209784



- Electro mechanical generated vacuum
- High vacuum flow.
- Integrated inlet filter and control valves
- Oil-free
- Vibration stable

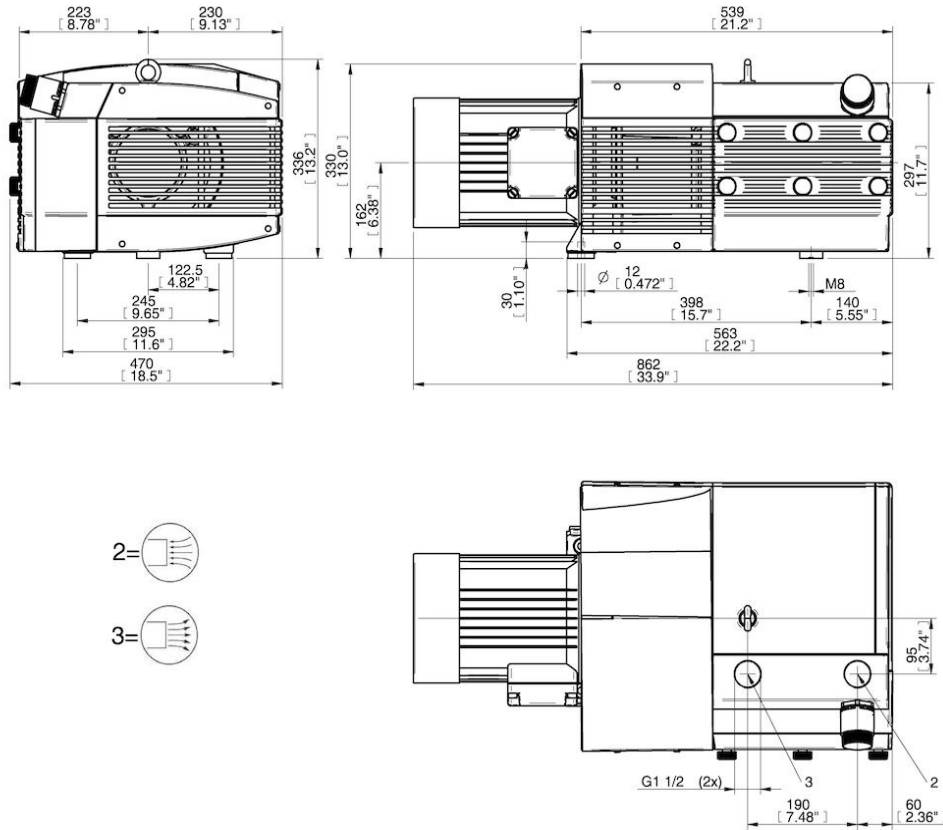
Technical data

Description	Unit	Value
Material	-	Iron FE
Weight, max.	g	118000
Electric connection	-	3AC 200V 50/60Hz. 3AC 220V 60Hz. 3AC 380V 60Hz
Noise level, max.	dBA	79
Noise level, min.	dBA	76
Rated Power (50Hz)	kW	4
Rated Power (60Hz)	kW	4.8

Performance

Ejector specification	Feed pressure MPa	Air consumption Nl/s	Vacuum flow (Nl/s) at different vacuum levels (-kPa)										Max vacuum -kPa
			0	10	20	30	40	50	60	70	80	≥90	
Vane pump 400 50Hz	0	0	35.8	31.9	27.9	23.9	19.9	15.9	11.9	8	4	≥90	
Vane pump 400 60Hz	0	0	42.8	38.1	33.3	28.6	23.9	19.2	14.4	9.7	5	≥80	

Dimensional drawings



Values specified in this datasheet are tested at (unless otherwise stated):

- Room temperature (20°C [68°F] ± 3°C [5.5°F]).
- Standard atmosphere (101.3 [29.9 inHg] ± 1.0 kPa [0.3 inHg]).
- Compressed air quality, DIN ISO 8573-1 class 4.

Tolerance and accuracy:

- Feed pressure tolerance ±0.02 MPa [2.9 psi]
- Vacuum flow/evacuation time accuracy ±10%.

Accessories

0205865 | Hose connection kit 400

0205950 | Hose connection kit G1 1/2" - D=63

Datasheet

Vane pump 400 IE3 400V

Article number: 0209782



- Electro mechanical generated vacuum
- High vacuum flow.
- Integrated inlet filter and control valves
- Oil-free
- Vibration stable

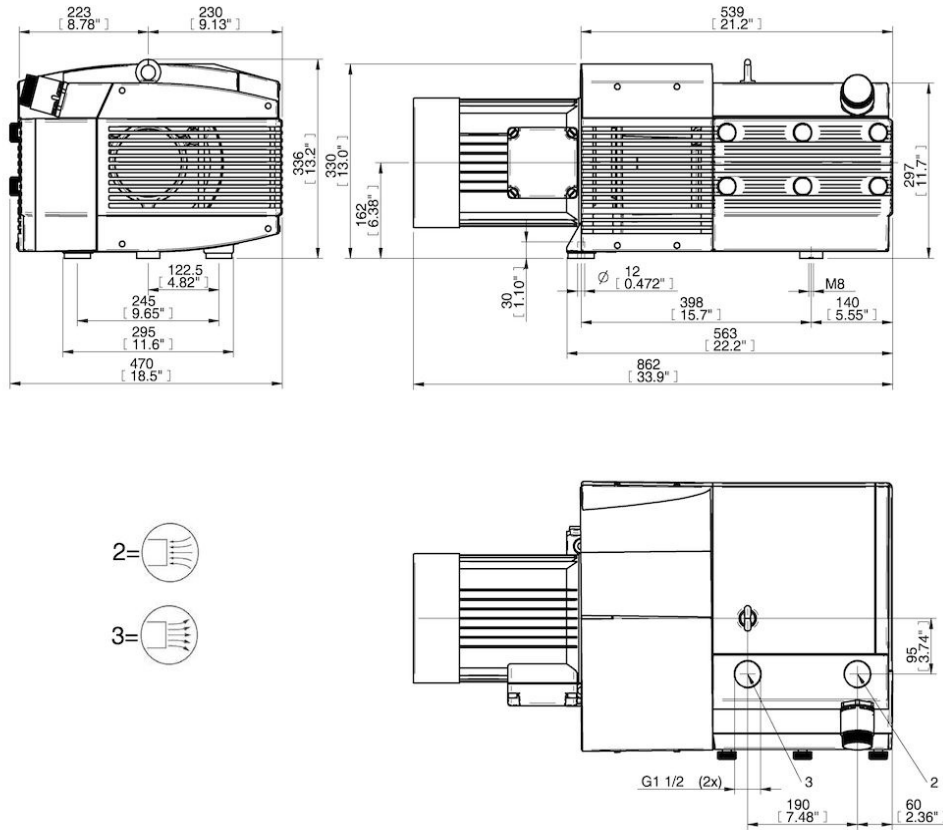
Technical data

Description	Unit	Value
Material	-	Iron FE
Weight, max.	g	118000
Electric connection	-	3AC 400V 50Hz
Noise level, max.	dBA	76
Rated Power (50Hz)	kW	4

Performance

Ejector specification	Feed pressure MPa	Air consumption Nl/s	Vacuum flow (Nl/s) at different vacuum levels (-kPa)								Max vacuum -kPa	
			0	10	20	30	40	50	60	70		80
Vane pump 400 50Hz	0	0	35.8	31.9	27.9	23.9	19.9	15.9	11.9	8	4	≥90

Dimensional drawings



Values specified in this datasheet are tested at (unless otherwise stated):

- Room temperature (20°C [68°F] ± 3°C [5.5°F]).
- Standard atmosphere (101.3 [29.9 inHg] ± 1.0 kPa [0.3 inHg]).
- Compressed air quality, DIN ISO 8573-1 class 4.

Tolerance and accuracy:

- Feed pressure tolerance ±0.02 MPa [2.9 psi]
- Vacuum flow/evacuation time accuracy ±10%.

Accessories

0205865 | Hose connection kit 400

0205950 | Hose connection kit G1 1/2" - D=63

Datasheet

Vane pump 400 IE3 460V, 208V,230V

Article number: 0209783



- Electro mechanical generated vacuum
- High vacuum flow.
- Integrated inlet filter and control valves
- Oil-free
- Vibration stable

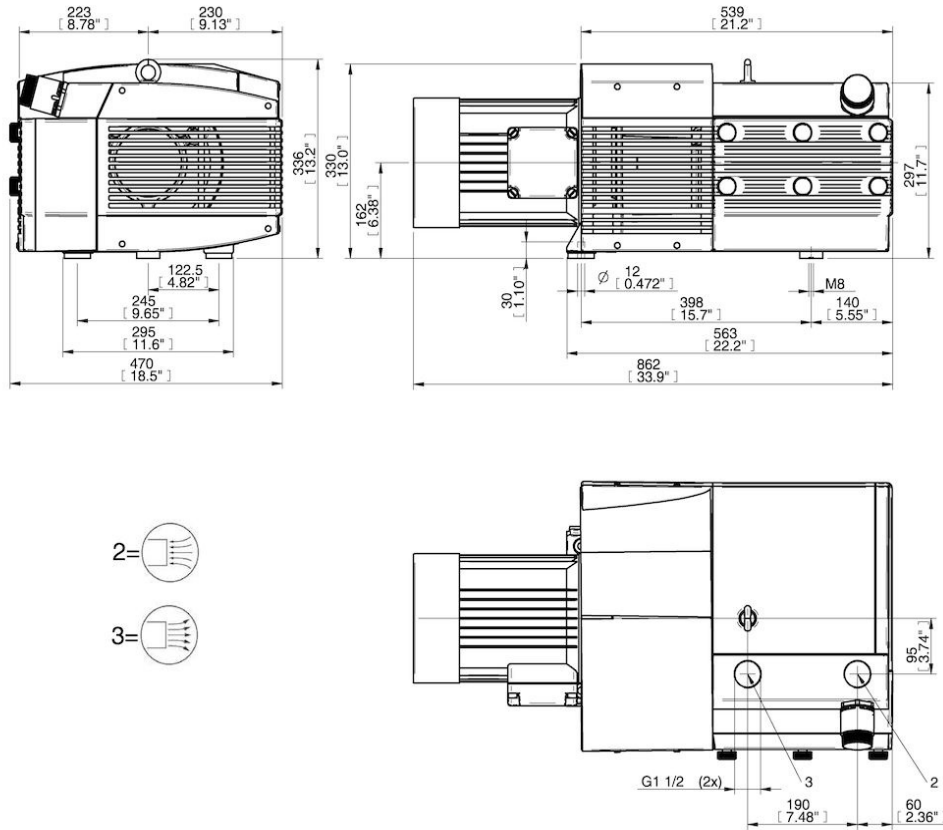
Technical data

Description	Unit	Value
Material	-	Iron FE
Weight, max.	g	118000
Feed pressure, max.	MPa	0
Electric connection	-	3AC 460V 60Hz. 3AC 208V 60Hz. 3AC 230V 60Hz
Noise level, max.	dBA	79
Rated Power (60Hz)	kW	4.8

Performance

Ejector specification	Feed pressure MPa	Air consumption Nl/s	Vacuum flow (Nl/s) at different vacuum levels (-kPa)										Max vacuum -kPa
			0	10	20	30	40	50	60	70	80	≥80	
Vane pump 400 60Hz	0	0	42.8	38.1	33.3	28.6	23.9	19.2	14.4	9.7	5	≥80	

Dimensional drawings



Values specified in this datasheet are tested at (unless otherwise stated):

- Room temperature (20°C [68°F] ± 3°C [5.5°F]).
- Standard atmosphere (101.3 [29.9 inHg] ± 1.0 kPa [0.3 inHg]).
- Compressed air quality, DIN ISO 8573-1 class 4.

Tolerance and accuracy:

- Feed pressure tolerance ±0.02 MPa [2.9 psi]
- Vacuum flow/evacuation time accuracy ±10%.

Accessories

0205865 | Hose connection kit 400

0205950 | Hose connection kit G1 1/2" - D=63

Datasheet

Vane pump 600/800 IE3 400V

Article number: 0209785



- Electro mechanical generated vacuum
- High vacuum flow.
- Integrated inlet filter and control valves
- Oil-free
- Vibration stable
- With non-return valve

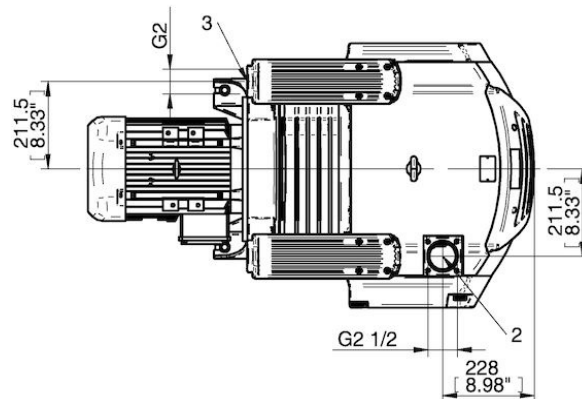
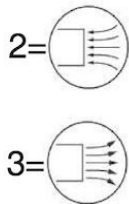
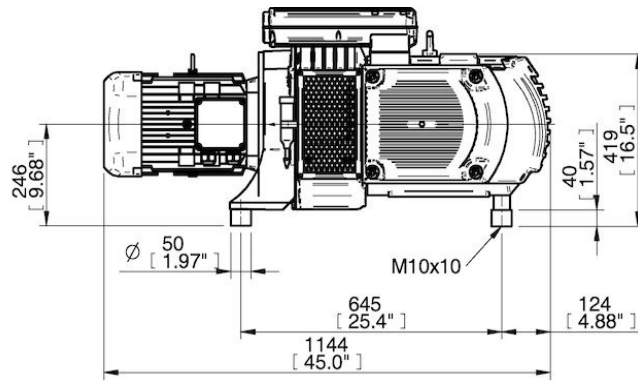
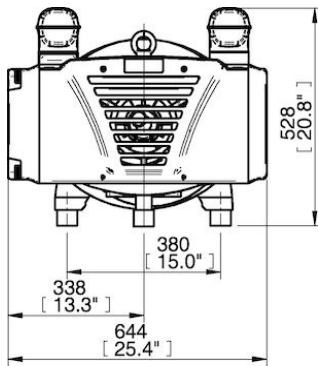
Technical data

Description	Unit	Value
Material	-	Iron FE
Weight, max.	g	258000
Electric connection	-	3AC 400V 50Hz
Noise level, max.	dBA	77
Rated Power (50Hz)	kW	5.5

Performance

Ejector specification	Feed pressure MPa	Air consumption NI/s	Vacuum flow (NI/s) at different vacuum levels (-kPa)										Max vacuum -kPa
			0	10	20	30	40	50	60	70	80		
Vane pump 600/800 50Hz	0	0	67.8	60.4	53	45.7	38.3	30.9	23.5	16.3	9.2	≥80	

Dimensional drawings



Values specified in this datasheet are tested at (unless otherwise stated):

- Room temperature (20°C [68°F] ± 3°C [5.5°F]).
- Standard atmosphere (101.3 [29.9 inHg] ± 1.0 kPa [0.3 inHg]).
- Compressed air quality, DIN ISO 8573-1 class 4.

Tolerance and accuracy:

- Feed pressure tolerance ±0.02 MPa [2.9 psi]
- Vacuum flow/evacuation time accuracy ±10%.

Accessories

0205866 | Hose connection kit 600/800

0205951 | Hose connection kit G2 1/2" - D=63

Vane pump 600/800 IE3 460V, 208V,230V

Article number: 0209786



- Electro mechanical generated vacuum
- High vacuum flow.
- Integrated inlet filter and control valves
- Oil-free
- Vibration stable
- With non-return valve

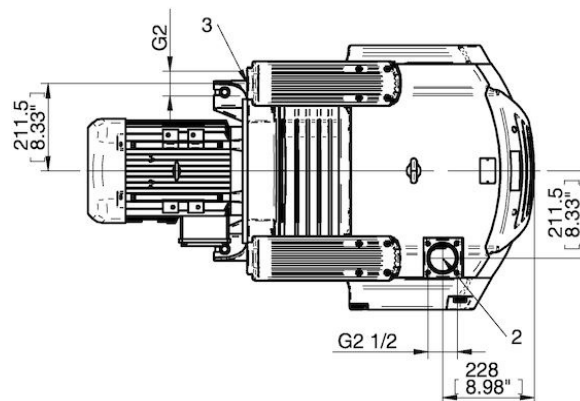
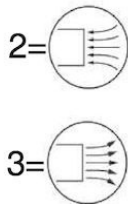
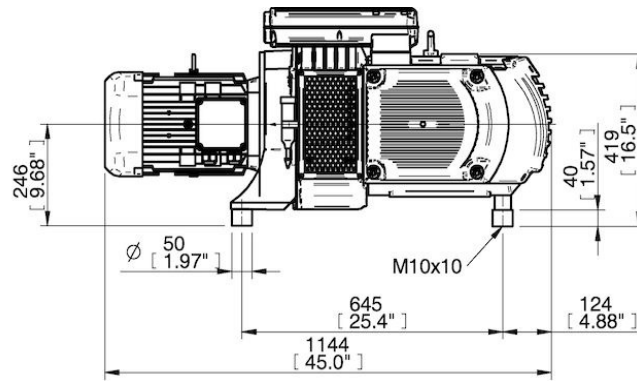
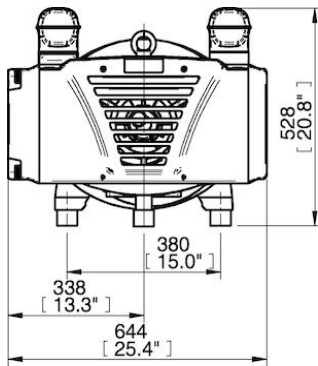
Technical data

Description	Unit	Value
Material	-	Iron FE
Weight, max.	g	258000
Electric connection	-	3AC 460V 60Hz. 3AC 208V 60Hz. 3AC 230V 60Hz
Noise level, max.	dB(A)	79
Rated Power (60Hz)	kW	6.6

Performance

Ejector specification	Feed pressure MPa	Air consumption Nm ³ /s	Vacuum flow (Nm ³ /s) at different vacuum levels (-kPa)									Max vacuum -kPa
			0	10	20	30	40	50	60	70	80	
Vane pump 600/800 60Hz	0	0	79.7	71.1	62.4	53.8	45.1	36.3	27.5	19.2	10.9	≥80

Dimensional drawings



Values specified in this datasheet are tested at (unless otherwise stated):

- Room temperature (20°C [68°F] ± 3°C [5.5°F]).
- Standard atmosphere (101.3 [29.9 inHg] ± 1.0 kPa [0.3 inHg]).
- Compressed air quality, DIN ISO 8573-1 class 4.

Tolerance and accuracy:

- Feed pressure tolerance ±0.02 MPa [2.9 psi]
- Vacuum flow/evacuation time accuracy ±10%.

Accessories

0205866 | Hose connection kit 600/800

0205951 | Hose connection kit G2 1/2" - D=63

Vane pump 600/800 IE3 200V, 220V, 380V

Article number: 0209788



- Electro mechanical generated vacuum
- High vacuum flow.
- Integrated inlet filter and control valves
- Oil-free
- Vibration stable
- With non-return valve

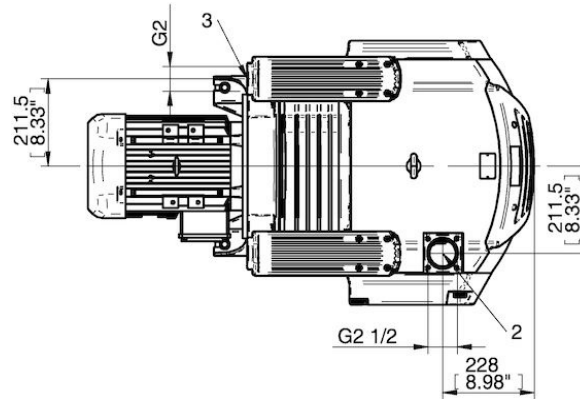
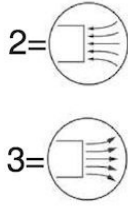
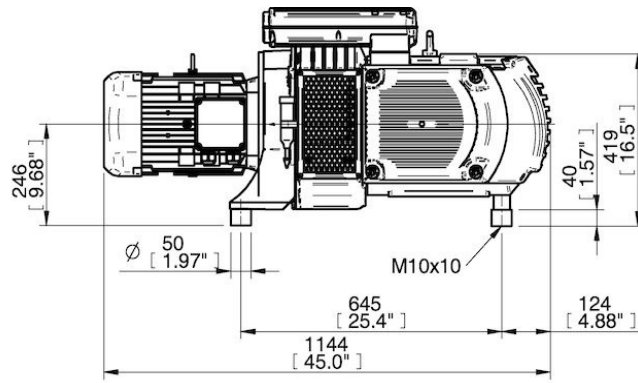
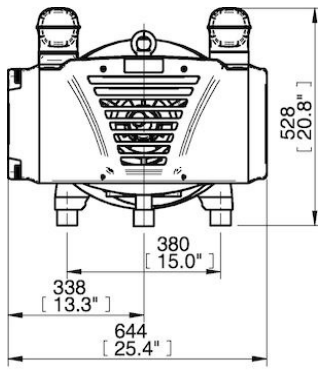
Technical data

Description	Unit	Value
Material	-	Iron FE
Weight, max.	g	258000
Electric connection	-	3AC 200V 50/60Hz. 3AC 220V 60Hz. 3AC 380V 60Hz
Noise level, max.	dBA	79
Noise level, min.	dBA	77
Rated Power (50Hz)	kW	5.5
Rated Power (60Hz)	kW	6.6

Performance

Ejector specification	Feed pressure MPa	Air consumption Nl/s	Vacuum flow (Nl/s) at different vacuum levels (-kPa)									Max vacuum -kPa
			0	10	20	30	40	50	60	70	80	
Vane pump 600/800 50Hz	0	0	67.8	60.4	53	45.7	38.3	30.9	23.5	16.3	9.2	≥80
Vane pump 600/800 60Hz	0	0	79.7	71.1	62.4	53.8	45.1	36.3	27.5	19.2	10.9	≥80

Dimensional drawings



Values specified in this datasheet are tested at (unless otherwise stated):

- Room temperature (20°C [68°F] ± 3°C [5.5°F]).
- Standard atmosphere (101.3 [29.9 inHg] ± 1.0 kPa [0.3 inHg]).
- Compressed air quality, DIN ISO 8573-1 class 4.

Tolerance and accuracy:

- Feed pressure tolerance ±0.02 MPa [2.9 psi]
- Vacuum flow/evacuation time accuracy ±10%.

Accessories

0205866 | Hose connection kit 600/800

0205951 | Hose connection kit G2 1/2" - D=63

Vane pump 1200/1600 IE3 400V

Article number: 0209789



- Electro mechanical generated vacuum
- High vacuum flow.
- Integrated inlet filter and control valves
- Oil-free
- Vibration stable
- With non-return valve

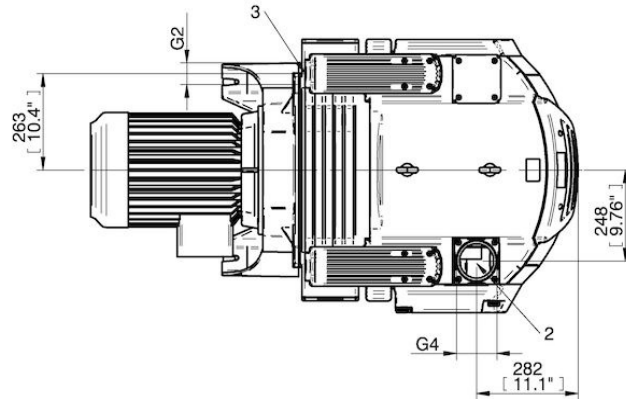
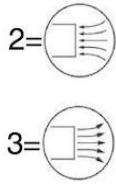
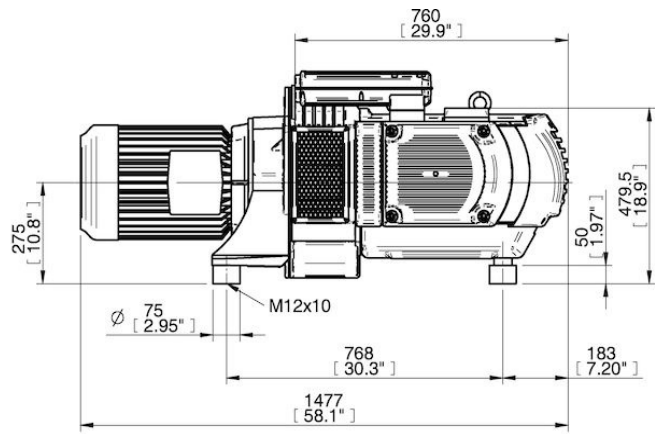
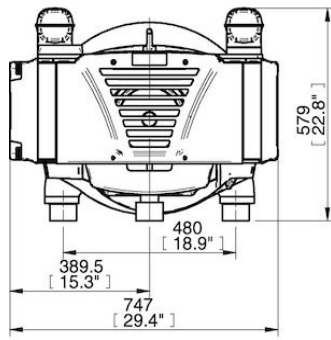
Technical data

Description	Unit	Value
Material	-	Iron FE
Weight, max.	g	411000
Electric connection	-	3AC 400V 50Hz
Noise level, max.	dBA	79
Rated Power (50Hz)	kW	11

Performance

Ejector specification	Feed pressure MPa	Air consumption Nl/s	Vacuum flow (Nl/s) at different vacuum levels (-kPa)									Max vacuum -kPa
			0	10	20	30	40	50	60	70	75	
Vane pump 1200/1600 50Hz	0	0	137.4	122.8	107.5	91.7	77.5	63.4	47.3	32.9	26.1	≥75

Dimensional drawings



Values specified in this datasheet are tested at (unless otherwise stated):

- Room temperature (20°C [68°F] ± 3°C [5.5°F]).
- Standard atmosphere (101.3 [29.9 inHg] ± 1.0 kPa [0.3 inHg]).
- Compressed air quality, DIN ISO 8573-1 class 4.

Tolerance and accuracy:

- Feed pressure tolerance ±0.02 MPa [2.9 psi]
- Vacuum flow/evacuation time accuracy ±10%.

Accessories

0205867 | Hose connection kit 1200/1600

Vane pump 1200/1600 IE3 460V, 208V, 230V

Article number: 0209790



- Electro mechanical generated vacuum
- High vacuum flow.
- Integrated inlet filter and control valves
- Oil-free
- Vibration stable
- With non-return valve

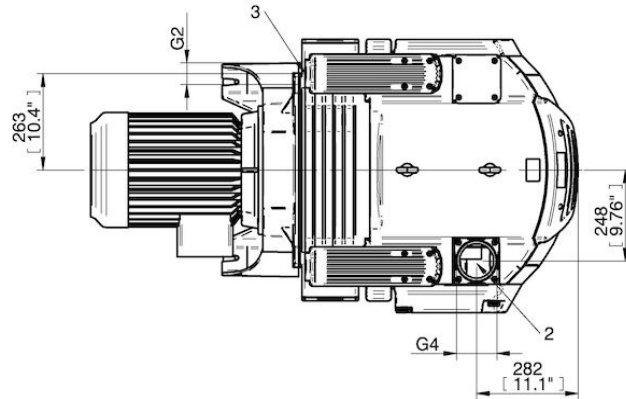
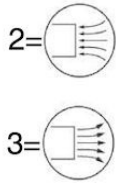
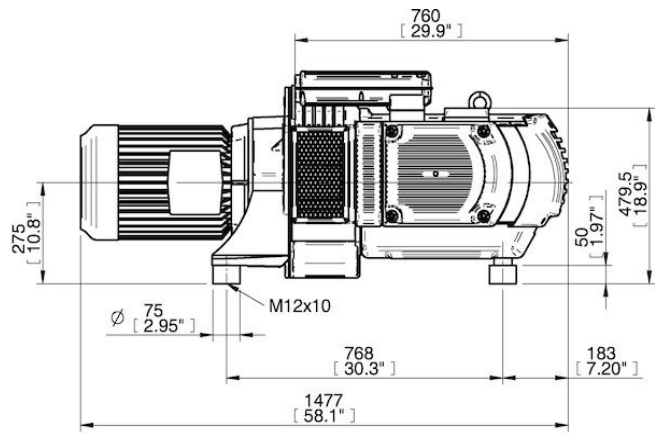
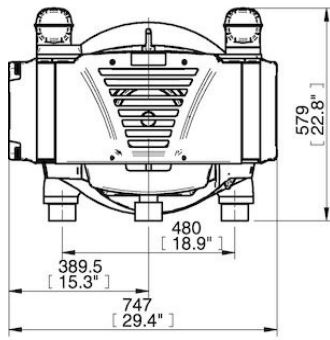
Technical data

Description	Unit	Value
Material	-	Iron FE
Weight, max.	g	411000
Electric connection	-	3AC 460V 60Hz. 3AC 208V 60Hz. 3AC 230V 60Hz
Noise level, max.	dBA	80
Rated Power (60Hz)	kW	13.2

Performance

Ejector specification	Feed pressure MPa	Air consumption Nl/s	Vacuum flow (Nl/s) at different vacuum levels (-kPa)								Max vacuum -kPa	
			0	10	20	30	40	50	60	70		75
Vane pump 1200/1600 60Hz	0	0	158.7	141.7	125	106.9	90.5	73.4	56.3	38.9	30.9	≥75

Dimensional drawings



Values specified in this datasheet are tested at (unless otherwise stated):

- Room temperature (20°C [68°F] ± 3°C [5.5°F]).
- Standard atmosphere (101.3 [29.9 inHg] ± 1.0 kPa [0.3 inHg]).
- Compressed air quality, DIN ISO 8573-1 class 4.

Tolerance and accuracy:

- Feed pressure tolerance ±0.02 MPa [2.9 psi]
- Vacuum flow/evacuation time accuracy ±10%.

Accessories

0205867 | Hose connection kit 1200/1600

Vane pump 1200/1600 IE3 200V, 220V, 380V

Article number: 0209791



- Electro mechanical generated vacuum
- High vacuum flow.
- Integrated inlet filter and control valves
- Oil-free
- Vibration stable
- With non-return valve

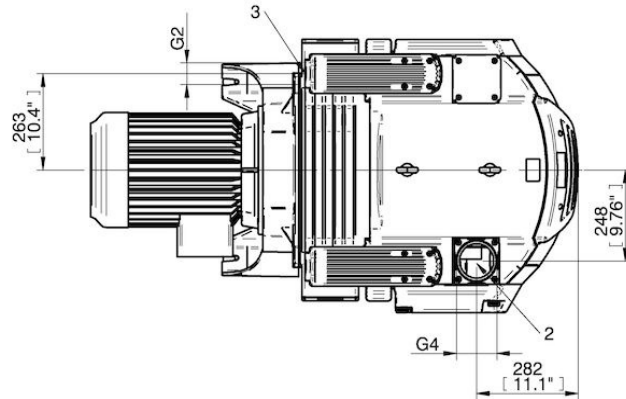
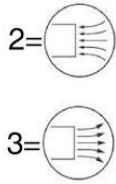
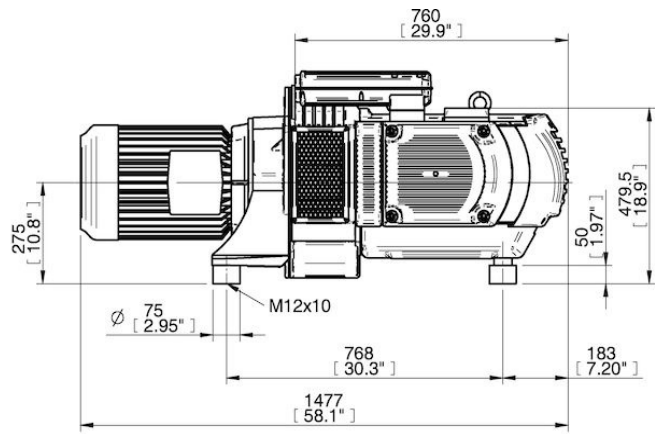
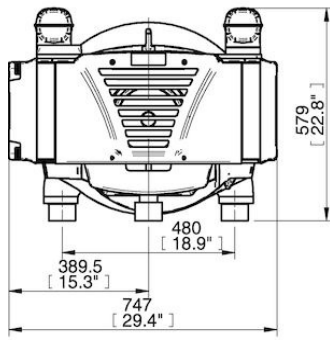
Technical data

Description	Unit	Value
Material	-	Iron FE
Weight, max.	g	411000
Electric connection	-	3AC 200V 50/60Hz. 3AC 220V 60Hz. 3AC 380V 60Hz
Noise level, max.	dBA	80
Noise level, min.	dBA	79
Rated Power (50Hz)	kW	11
Rated Power (60Hz)	kW	13.2

Performance

Ejector specification	Feed pressure MPa	Air consumption Nl/s	Vacuum flow (Nl/s) at different vacuum levels (-kPa)										Max vacuum -kPa
			0	10	20	30	40	50	60	70	75		
Vane pump 1200/1600 50Hz	0	0	137.4	122.8	107.5	91.7	77.5	63.4	47.3	32.9	26.1	≥75	
Vane pump 1200/1600 60Hz	0	0	158.7	141.7	125	106.9	90.5	73.4	56.3	38.9	30.9	≥75	

Dimensional drawings



Values specified in this datasheet are tested at (unless otherwise stated):

- Room temperature (20°C [68°F] ± 3°C [5.5°F]).
- Standard atmosphere (101.3 [29.9 inHg] ± 1.0 kPa [0.3 inHg]).
- Compressed air quality, DIN ISO 8573-1 class 4.

Tolerance and accuracy:

- Feed pressure tolerance ±0.02 MPa [2.9 psi]
- Vacuum flow/evacuation time accuracy ±10%.

Accessories

0205867 | Hose connection kit 1200/1600

BONDY

INDUSTRIAL EQUIPMENT SUPPLIER



Transmission



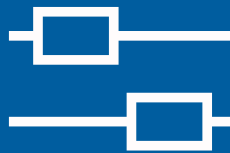
Handling



Motor & Gear



Vacuum Conveying



Linear



Support

See our products and solutions at

www.bondy.dk

For ordering and questions call (+45) 70 15 14 14