

BONDY

INDUSTRIAL EQUIPMENT SUPPLIER

Piab Conveyor Upgrade Kits

For ordering and questions call

(+45) 70 15 14 14

piPREMIUM upgrade kit C21-100

Article number: 0200330



- The kit is a plug-and-play assembly for a quick changeover to replace the Maxi L pump and top module
- COAX® patented technology
- Side mounted for low building height
- High vacuum flow
- Compact size and low weight
- Low noise level
- Modular design
- Pneumatic valve for compressed air to shock tank and mounting plate for the C series are included

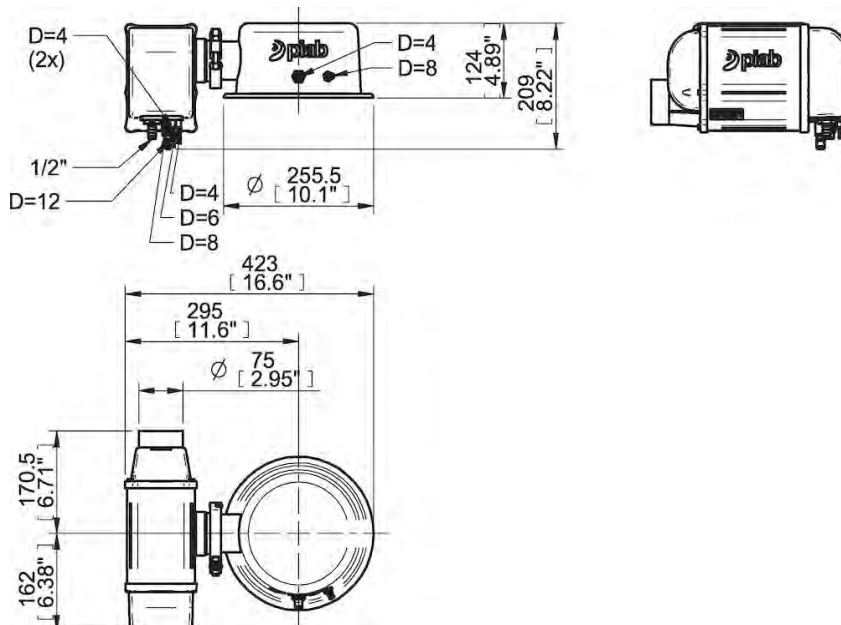
Technical data

Description	Unit	Value
Material	-	Al. ASTM 316L. Nitrile (NBR). PA. PP. SS
Temperature, max.	°C	60
Temperature, min.	°C	0
Weight, min.	g	9000
Feed pressure, max.	MPa	0.7
Noise level, max.	dBA	77
Noise level, min.	dBA	69
Feed pressure, optimum, max.	MPa	0.6
Feed pressure, optimum, min.	MPa	0.4
Vacuum, max.	-kPa	75
Vacuum, min.	-kPa	60

Performance

Ejector specification	Feed pressure MPa	Air consumption Nm/s	Vacuum flow (Nm/s) at different vacuum levels (-kPa)								Max vacuum -kPa
			0	10	20	30	40	50	60	70	
piPREMIUM100	0.4	5	20	11.6	7.6	4.8	3.2	1.6	0.4	0	≥60
piPREMIUM100	0.5	6	22.8	13.2	8.8	5.6	3.4	2.5	1.4	0.72	≥70
piPREMIUM100	0.6	7	24	14	10.4	6.8	3.6	2.4	2	1.4	≥75

Dimensional drawings



Values specified in this datasheet are tested at (unless otherwise stated):

- Room temperature (20°C [68°F] ± 3°C [5.5°F]).
- Standard atmosphere (101.3 [29.9 inHg] ± 1.0 kPa [0.3 inHg]).
- Compressed air quality, DIN ISO 8573-1 class 4.

Tolerance and accuracy:

- Feed pressure tolerance ±0.02 MPa [2.9 psi]
- Vacuum flow/evacuation time accuracy ±10%.

Accessories

0104490 | Regulator kit piFLOW®p 1/2" 100-400

0129790 | Wall mounting kit pump piPREMIUM 100-400

0201649 | Maintenance kit piFLOW® pumps

piPREMIUM upgrade kit C21-200

Article number: 0200331



- The kit is a plug-and-play assembly for a quick changeover to replace the Maxi L pump and top module
- COAX® patented technology
- Side mounted for low building height
- High vacuum flow
- Compact size and low weight
- Low noise level
- Modular design
- Pneumatic valve for compressed air to shock tank and mounting plate for the C series are included

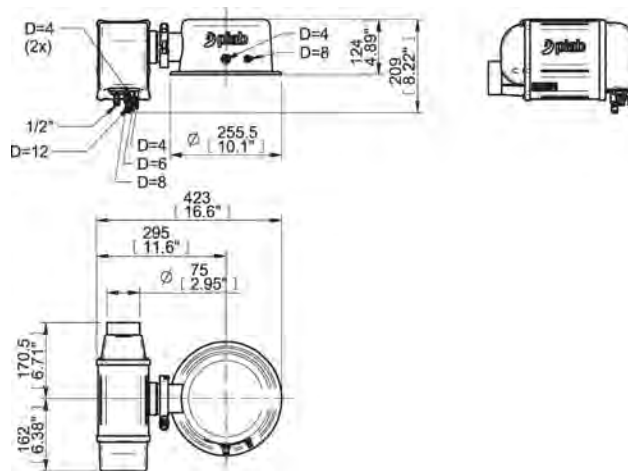
Technical data

Description	Unit	Value
Material	-	Al. ASTM 316L. Nitrile (NBR). PA. PP. SS
Temperature, max.	°C	60
Temperature, min.	°C	0
Weight, min.	g	9000
Feed pressure, max.	MPa	0.7
Noise level, max.	dBA	77
Noise level, min.	dBA	69
Feed pressure, optimum, max.	MPa	0.6
Feed pressure, optimum, min.	MPa	0.4
Vacuum, max.	-kPa	75
Vacuum, min.	-kPa	60

Performance

Ejector specification	Feed pressure MPa	Air consumption Nl/s	Vacuum flow (Nl/s) at different vacuum levels (-kPa)								Max vacuum -kPa
			0	10	20	30	40	50	60	70	
piPREMIUM200	0.4	10	40	23.2	15.2	9.6	6.4	3.2	0.8	0	≥60
piPREMIUM200	0.5	12	46	26	17.6	11.2	6.8	5	2.8	1.4	≥70
piPREMIUM200	0.6	14	48	28	20.8	13.6	7.2	4.8	4	2.8	≥75

Dimensional drawings



Values specified in this datasheet are tested at (unless otherwise stated):

- Room temperature (20°C [68°F] ± 3°C [5.5°F]).
- Standard atmosphere (101.3 [29.9 inHg] ± 1.0 kPa [0.3 inHg]).
- Compressed air quality, DIN ISO 8573-1 class 4.

Tolerance and accuracy:

- Feed pressure tolerance ±0.02 MPa [2.9 psi]
- Vacuum flow/evacuation time accuracy ±10%.

Accessories

0104490 | Regulator kit piFLOW®p 1/2" 100-400

0129790 | Wall mounting kit pump piPREMIUM 100-400

0201649 | Maintenance kit piFLOW® pumps

piPREMIUM upgrade kit C21-400

Article number: 0200332



- The kit is a plug-and-play assembly for a quick changeover to replace the Maxi L pump and top module
- COAX® patented technology
- Side mounted for low building height
- High vacuum flow
- Compact size and low weight
- Low noise level
- Modular design
- Pneumatic valve for compressed air to shock tank and mounting plate for the C series are included

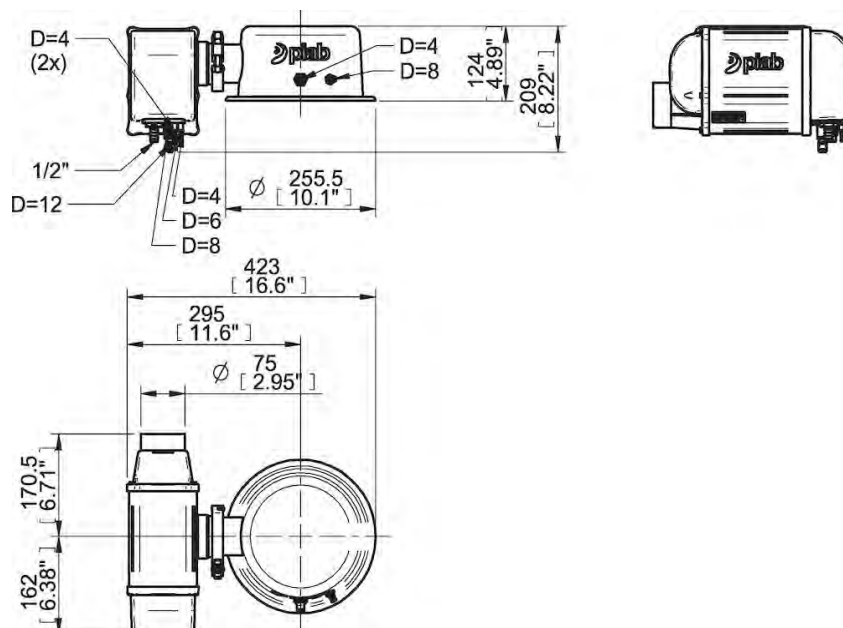
Technical data

Description	Unit	Value
Material	-	Al. ASTM 316L. Nitrile (NBR). PA. PP. SS
Temperature, max.	°C	60
Temperature, min.	°C	0
Weight, min.	g	9000
Feed pressure, max.	MPa	0.7
Noise level, max.	dBA	77
Noise level, min.	dBA	69
Feed pressure, optimum, max.	MPa	0.6
Feed pressure, optimum, min.	MPa	0.4
Vacuum, max.	-kPa	75
Vacuum, min.	-kPa	60

Performance

Ejector specification	Feed pressure MPa	Air consumption Nl/s	Vacuum flow (Nl/s) at different vacuum levels (-kPa)								Max vacuum -kPa
			0	10	20	30	40	50	60	70	
piPREMIUM400	0.4	20	64	42	30	19.2	12.8	6.4	1.6	0	≥60
piPREMIUM400	0.5	24	73	46	35	22.4	13.6	9.9	5.6	2.9	≥70
piPREMIUM400	0.6	28	77	48	42	27	14.4	9.6	8	5.6	≥75

Dimensional drawings



Values specified in this datasheet are tested at (unless otherwise stated):

- Room temperature (20°C [68°F] ± 3°C [5.5°F]).
- Standard atmosphere (101.3 [29.9 inHg] ± 1.0 kPa [0.3 inHg]).
- Compressed air quality, DIN ISO 8573-1 class 4.

Tolerance and accuracy:

- Feed pressure tolerance ±0.02 MPa [2.9 psi]
- Vacuum flow/evacuation time accuracy ±10%.

Accessories

0104490 | Regulator kit piFLOW®p 1/2" 100-400

0129790 | Wall mounting kit pump piPREMIUM 100-400

0201649 | Maintenance kit piFLOW® pumps

piPREMIUM upgrade kit C33-1200

Article number: 0201126



- The kit is a plug-and-play assembly for a quick changeover to replace the Maxi L pump and top module
- COAX® patented technology
- Side mounted for low building height
- High vacuum flow
- Compact size and low weight
- Low noise level
- Modular design
- Pneumatic valve for compressed air to shock tank and mounting plate for the C series are included

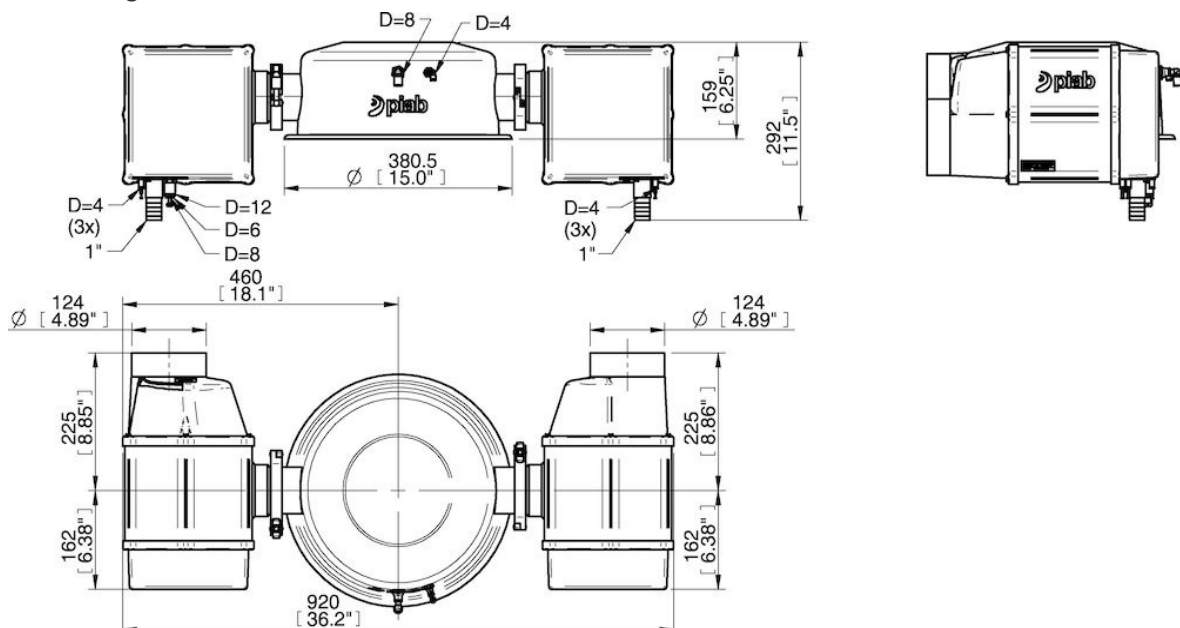
Technical data

Description	Unit	Value
Material	-	Al. ASTM 316L. Nitrile (NBR). PA. PP. SS
Temperature, max.	°C	60
Temperature, min.	°C	0
Weight, min.	g	21000
Feed pressure, max.	MPa	0.7
Noise level, max.	dBA	77
Noise level, min.	dBA	69
Feed pressure, optimum, max.	MPa	0.6
Feed pressure, optimum, min.	MPa	0.4
Vacuum, max.	-kPa	75
Vacuum, min.	-kPa	60

Performance

Ejector specification	Feed pressure MPa	Air consumption Nl/s	Vacuum flow (Nl/s) at different vacuum levels (-kPa)								Max vacuum -kPa
			0	10	20	30	40	50	60	70	
piPREMIUM1200	0.4	60	240	139	91	58	38	19.2	4.8	0	≥60
piPREMIUM1200	0.5	72	274	158	106	67	41	30	16.8	8.6	≥70
piPREMIUM1200	0.6	84	288	168	125	82	43	29	24	16.8	≥75

Dimensional drawings



Values specified in this datasheet are tested at (unless otherwise stated):

- Room temperature (20°C [68°F] ± 3°C [5.5°F]).
- Standard atmosphere (101.3 [29.9 inHg] ± 1.0 kPa [0.3 inHg]).
- Compressed air quality, DIN ISO 8573-1 class 4.

Tolerance and accuracy:

- Feed pressure tolerance ±0.02 MPa [2.9 psi]
- Vacuum flow/evacuation time accuracy ±10%.

Accessories

0201649 | Maintenance kit piFLOW® pumps

0201782 | Regulator kit piFLOW®p 1" 1200-1600 (0104491 x2)

0201786 | Wall mounting kit pump piPREMIUM 1200-1600 (0201025 x2)

piPREMIUM upgrade kit C33-200

Article number: 0200333



- The kit is a plug-and-play assembly for a quick changeover to replace the Maxi L pump and top module
- COAX® patented technology
- Side mounted for low building height
- High vacuum flow
- Compact size and low weight
- Low noise level
- Modular design
- Pneumatic valve for compressed air to shock tank and mounting plate for the C series are included

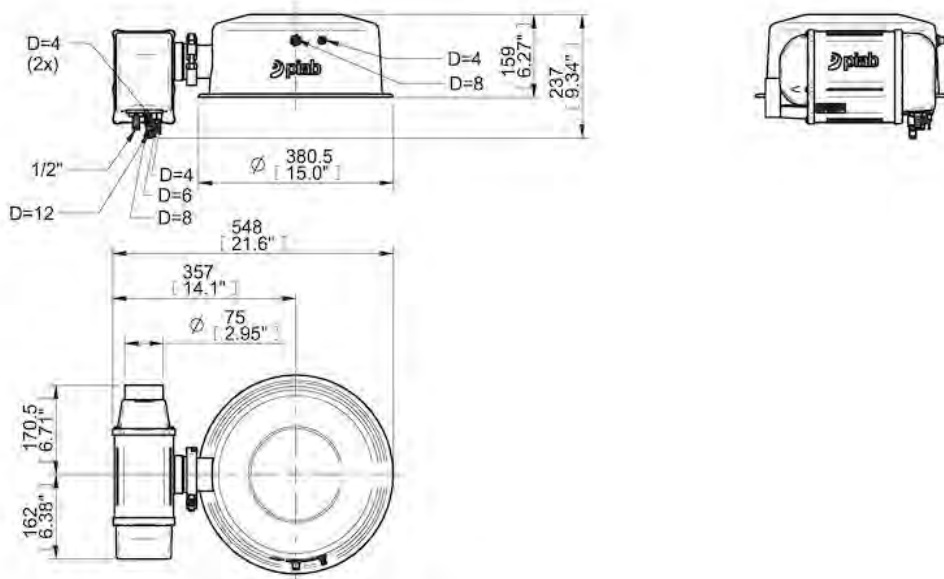
Technical data

Description	Unit	Value
Material	-	Al. ASTM 316L. Nitrile (NBR). PA. PP. SS
Temperature, max.	°C	60
Temperature, min.	°C	0
Weight, min.	g	10000
Feed pressure, max.	MPa	0.7
Noise level, max.	dBA	77
Noise level, min.	dBA	69
Feed pressure, optimum, max.	MPa	0.6
Feed pressure, optimum, min.	MPa	0.4
Vacuum, max.	-kPa	75
Vacuum, min.	-kPa	60

Performance

Ejector specification	Feed pressure MPa	Air consumption Nl/s	Vacuum flow (Nl/s) at different vacuum levels (-kPa)								Max vacuum -kPa
			0	10	20	30	40	50	60	70	
piPREMIUM200	0.4	10	40	23.2	15.2	9.6	6.4	3.2	0.8	0	≥60
piPREMIUM200	0.5	12	46	26	17.6	11.2	6.8	5	2.8	1.4	≥70
piPREMIUM200	0.6	14	48	28	20.8	13.6	7.2	4.8	4	2.8	≥75

Dimensional drawings



Values specified in this datasheet are tested at (unless otherwise stated):

- Room temperature (20°C [68°F] ± 3°C [5.5°F]).
- Standard atmosphere (101.3 [29.9 inHg] ± 1.0 kPa [0.3 inHg]).
- Compressed air quality, DIN ISO 8573-1 class 4.

Tolerance and accuracy:

- Feed pressure tolerance ±0.02 MPa [2.9 psi]
- Vacuum flow/evacuation time accuracy ±10%.

Accessories

0104490 | Regulator kit piFLOW®p 1/2" 100-400

0129790 | Wall mounting kit pump piPREMIUM 100-400

0201649 | Maintenance kit piFLOW® pumps

piPREMIUM upgrade kit C33-400

Article number: 0200334



- The kit is a plug-and-play assembly for a quick changeover to replace the Maxi L pump and top module
- COAX® patented technology
- Side mounted for low building height
- High vacuum flow
- Compact size and low weight
- Low noise level
- Modular design
- Pneumatic valve for compressed air to shock tank and mounting plate for the C series are included

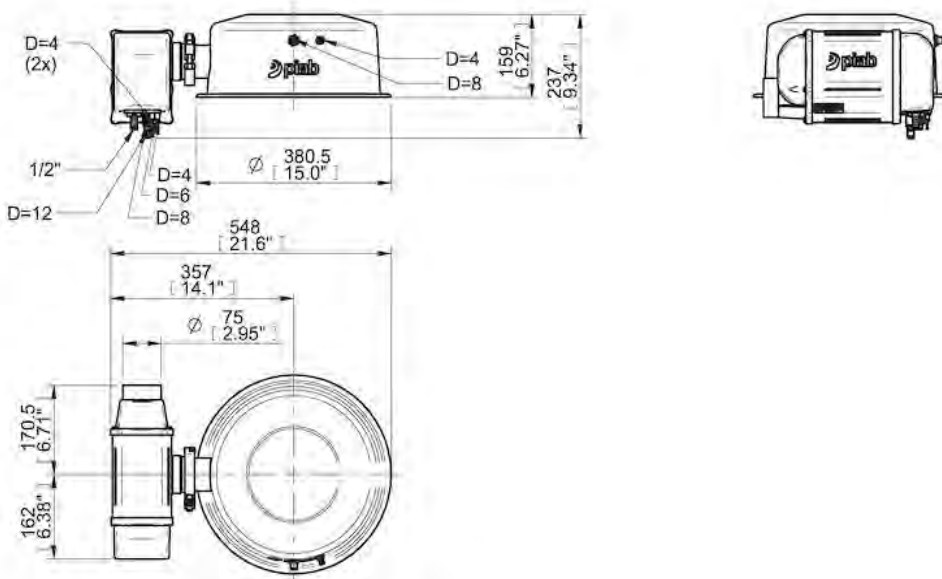
Technical data

Description	Unit	Value
Material	-	Al. ASTM 316L. Nitrile (NBR). PA. PP. SS
Temperature, max.	°C	60
Temperature, min.	°C	0
Weight, min.	g	10000
Feed pressure, max.	MPa	0.7
Noise level, max.	dBA	77
Noise level, min.	dBA	69
Feed pressure, optimum, max.	MPa	0.6
Feed pressure, optimum, min.	MPa	0.4
Vacuum, max.	-kPa	75
Vacuum, min.	-kPa	60

Performance

Ejector specification	Feed pressure MPa	Air consumption Nl/s	Vacuum flow (Nl/s) at different vacuum levels (-kPa)								Max vacuum -kPa
			0	10	20	30	40	50	60	70	
piPREMIUM400	0.4	20	64	42	30	19.2	12.8	6.4	1.6	0	≥60
piPREMIUM400	0.5	24	73	46	35	22.4	13.6	9.9	5.6	2.9	≥70
piPREMIUM400	0.6	28	77	48	42	27	14.4	9.6	8	5.6	≥75

Dimensional drawings



Values specified in this datasheet are tested at (unless otherwise stated):

- Room temperature (20°C [68°F] ± 3°C [5.5°F]).
- Standard atmosphere (101.3 [29.9 inHg] ± 1.0 kPa [0.3 inHg]).
- Compressed air quality, DIN ISO 8573-1 class 4.

Tolerance and accuracy:

- Feed pressure tolerance ±0.02 MPa [2.9 psi]
- Vacuum flow/evacuation time accuracy ±10%.

Accessories

0104490 | Regulator kit piFLOW®p 1/2" 100-400

0129790 | Wall mounting kit pump piPREMIUM 100-400

0201649 | Maintenance kit piFLOW® pumps

piPREMIUM upgrade kit C33-800

Article number: 0201086



- The kit is a plug-and-play assembly for a quick changeover to replace the Maxi L pump and top module
- COAX® patented technology
- Side mounted for low building height
- High vacuum flow
- Compact size and low weight
- Low noise level
- Modular design
- Pneumatic valve for compressed air to shock tank and mounting plate for the C series are included

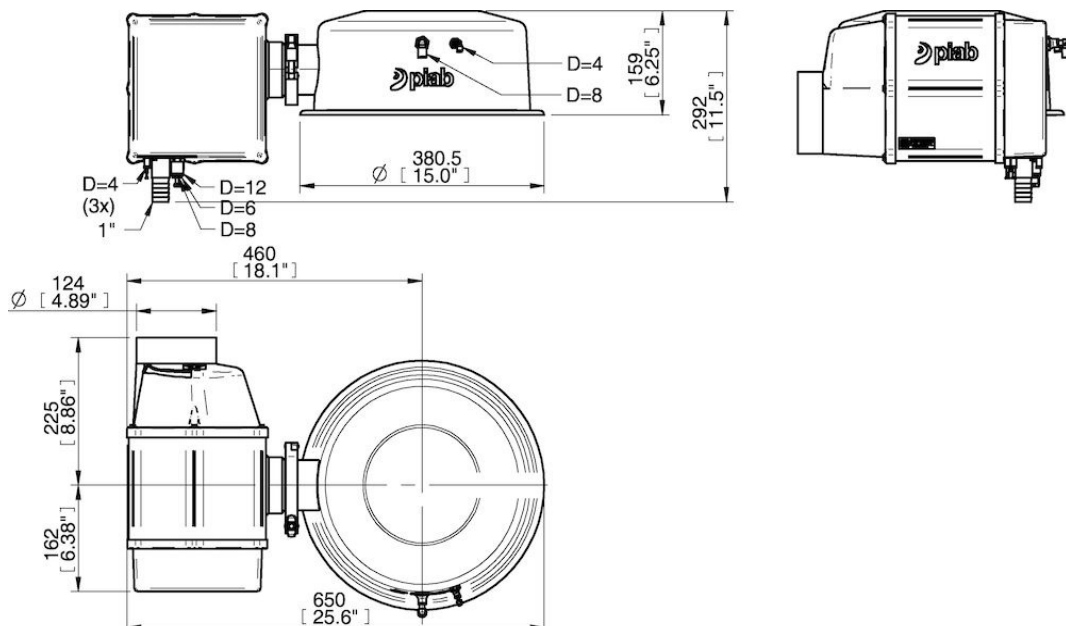
Technical data

Description	Unit	Value
Material	-	Al. ASTM 316L. Nitrile (NBR). PA. PP. SS
Temperature, max.	°C	60
Temperature, min.	°C	0
Weight, min.	g	12000
Feed pressure, max.	MPa	0.7
Noise level, max.	dBA	77
Noise level, min.	dBA	69
Feed pressure, optimum, max.	MPa	0.6
Feed pressure, optimum, min.	MPa	0.4
Vacuum, max.	-kPa	75
Vacuum, min.	-kPa	60

Performance

Ejector specification	Feed pressure MPa	Air consumption Nl/s	Vacuum flow (Nl/s) at different vacuum levels (-kPa)								Max vacuum -kPa
			0	10	20	30	40	50	60	70	
piPREMIUM800	0.4	40	157	87	61	38	26	12.8	3.2	0	≥60
piPREMIUM800	0.5	48	167	98	70	45	27	19.8	11.2	5.8	≥70
piPREMIUM800	0.6	56	170	106	83	54	29	19.2	16	11.2	≥75

Dimensional drawings



Values specified in this datasheet are tested at (unless otherwise stated):

- Room temperature (20°C [68°F] ± 3°C [5.5°F]).
- Standard atmosphere (101.3 [29.9 inHg] ± 1.0 kPa [0.3 inHg]).
- Compressed air quality, DIN ISO 8573-1 class 4.

Tolerance and accuracy:

- Feed pressure tolerance ±0.02 MPa [2.9 psi]
- Vacuum flow/evacuation time accuracy ±10%.

Accessories

0104491 | Regulator kit piFLOW®p 1" 600-800

0201025 | Wall mounting kit pump piPREMIUM 600-800

0201649 | Maintenance kit piFLOW® pumps

piPREMIUM upgrade kit C33-600

Article number: 0201087



- The kit is a plug-and-play assembly for a quick changeover to replace the Maxi L pump and top module
- COAX® patented technology
- Side mounted for low building height
- High vacuum flow
- Compact size and low weight
- Low noise level
- Modular design
- Pneumatic valve for compressed air to shock tank and mounting plate for the C series are included

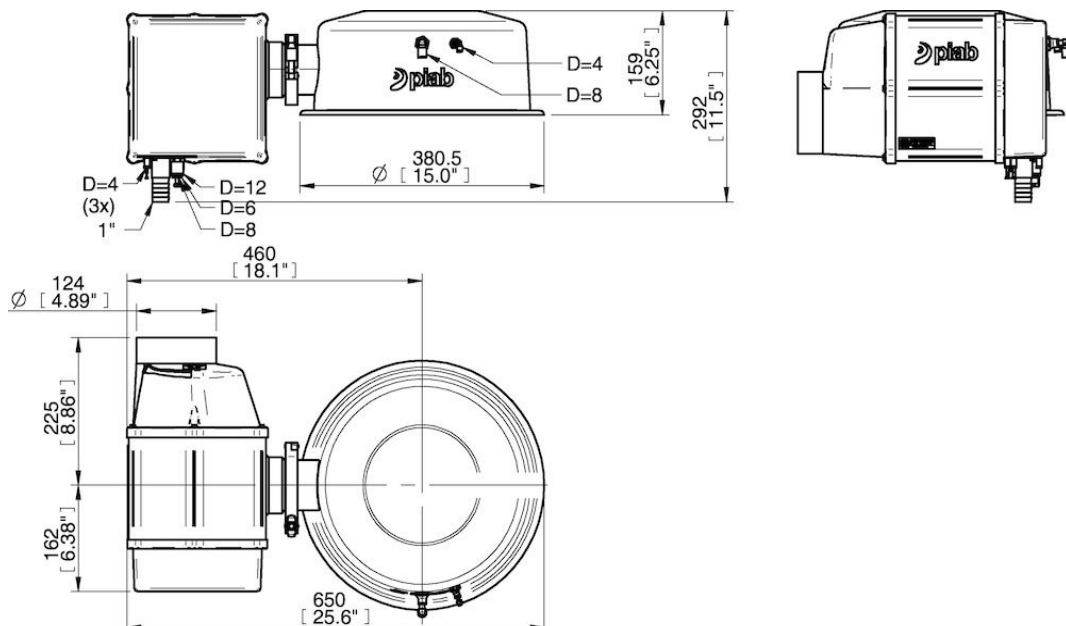
Technical data

Description	Unit	Value
Material	-	Al. ASTM 316L. Nitrile (NBR). PA. PP. SS
Temperature, max.	°C	60
Temperature, min.	°C	0
Weight, min.	g	12000
Feed pressure, max.	MPa	0.7
Noise level, max.	dBA	77
Noise level, min.	dBA	69
Feed pressure, optimum, max.	MPa	0.6
Feed pressure, optimum, min.	MPa	0.4
Vacuum, max.	-kPa	75
Vacuum, min.	-kPa	60

Performance

Ejector specification	Feed pressure MPa	Air consumption Nl/s	Vacuum flow (Nl/s) at different vacuum levels (-kPa)								Max vacuum -kPa
			0	10	20	30	40	50	60	70	
piPREMIUM600	0.4	30	120	70	46	29	19.2	9.6	2.4	0	≥60
piPREMIUM600	0.5	36	137	79	53	34	20.4	14.9	8.4	4.3	≥70
piPREMIUM600	0.6	42	144	84	62	41	21.6	14.4	12	8.4	≥75

Dimensional drawings



Values specified in this datasheet are tested at (unless otherwise stated):

- Room temperature (20°C [68°F] ± 3°C [5.5°F]).
- Standard atmosphere (101.3 [29.9 inHg] ± 1.0 kPa [0.3 inHg]).
- Compressed air quality, DIN ISO 8573-1 class 4.

Tolerance and accuracy:

- Feed pressure tolerance ±0.02 MPa [2.9 psi]
- Vacuum flow/evacuation time accuracy ±10%.

Accessories

0104491 | Regulator kit piFLOW®p 1" 600-800

0201025 | Wall mounting kit pump piPREMIUM 600-800

0201649 | Maintenance kit piFLOW® pumps

piPREMIUM upgrade kit C56-1200

Article number: 0201172



- The kit is a plug-and-play assembly for a quick changeover to replace the Maxi L pump and top module
- COAX® patented technology
- Side mounted for low building height
- High vacuum flow
- Compact size and low weight
- Low noise level
- Modular design
- Pneumatic valve for compressed air to shock tank and mounting plate for the C series are included

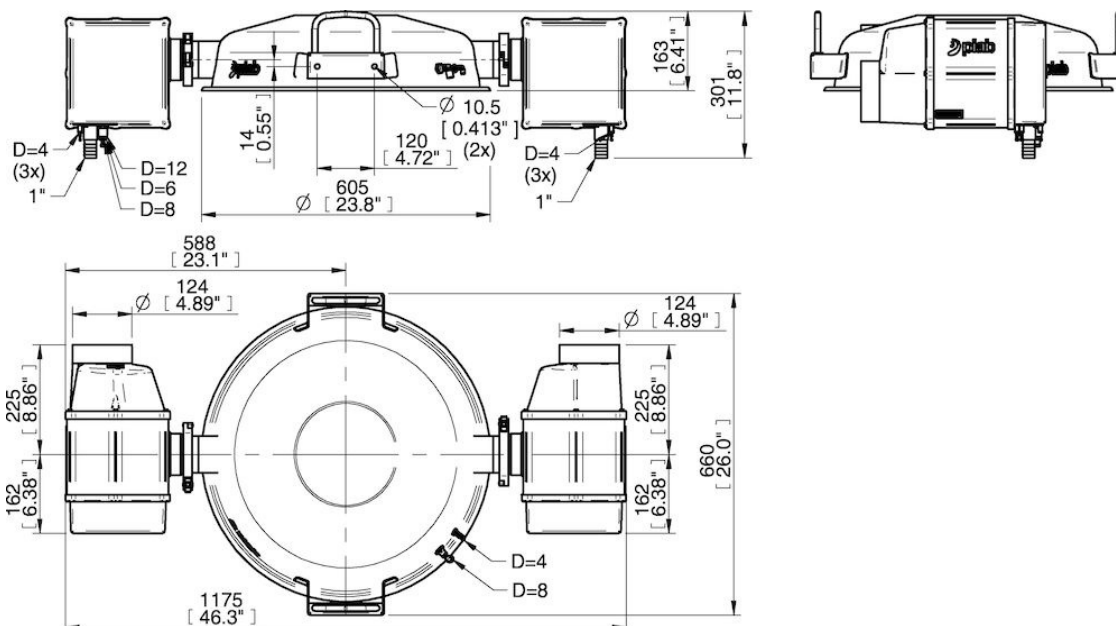
Technical data

Description	Unit	Value
Material	-	Al. ASTM 316L. Nitrile (NBR). PA. PP. SS
Temperature, max.	°C	60
Temperature, min.	°C	0
Weight, min.	g	25000
Feed pressure, max.	MPa	0.7
Noise level, max.	dBA	77
Noise level, min.	dBA	69
Feed pressure, optimum, max.	MPa	0.6
Feed pressure, optimum, min.	MPa	0.4
Vacuum, max.	-kPa	75
Vacuum, min.	-kPa	60

Performance

Ejector specification	Feed pressure MPa	Air consumption Nl/s	Vacuum flow (Nl/s) at different vacuum levels (-kPa)								Max vacuum -kPa
			0	10	20	30	40	50	60	70	
piPREMIUM1200	0.4	60	240	139	91	58	38	19.2	4.8	0	≥60
piPREMIUM1200	0.5	72	274	158	106	67	41	30	16.8	8.6	≥70
piPREMIUM1200	0.6	84	288	168	125	82	43	29	24	16.8	≥75

Dimensional drawings



piPREMIUM upgrade kit C56-1600

Article number: 0201173



- The kit is a plug-and-play assembly for a quick changeover to replace the Maxi L pump and top module
- COAX® patented technology
- Side mounted for low building height
- High vacuum flow
- Compact size and low weight
- Low noise level
- Modular design
- Pneumatic valve for compressed air to shock tank and mounting plate for the C series are included

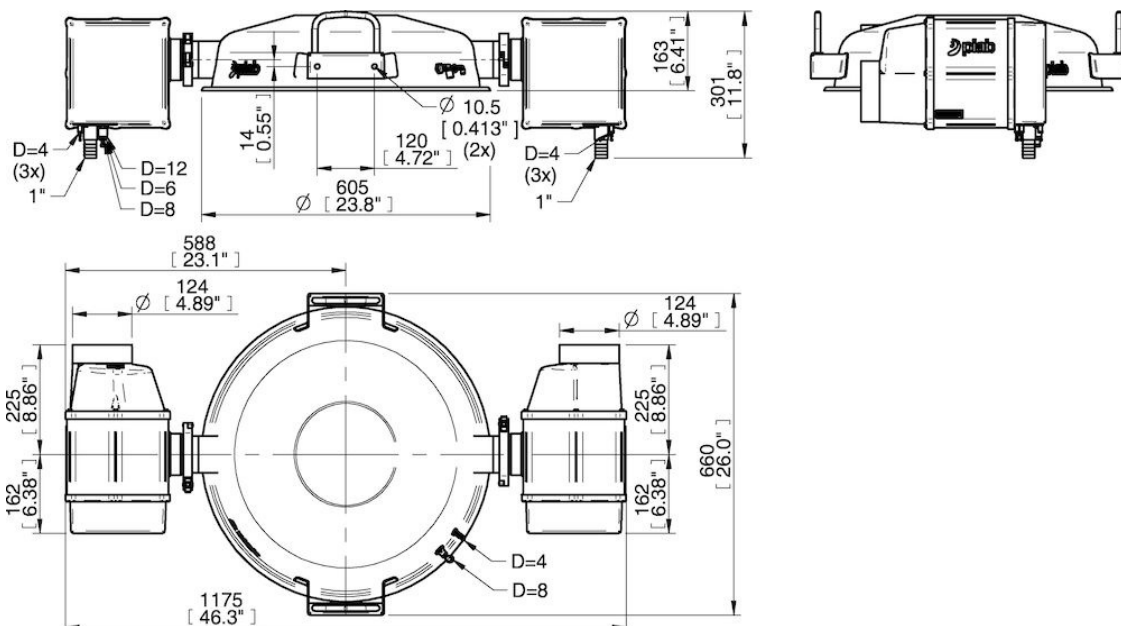
Technical data

Description	Unit	Value
Material	-	Al. ASTM 316L. Nitrile (NBR). PA. PP. SS
Temperature, max.	°C	60
Temperature, min.	°C	0
Weight, min.	g	25000
Feed pressure, max.	MPa	0.7
Noise level, max.	dBA	77
Noise level, min.	dBA	69
Feed pressure, optimum, max.	MPa	0.6
Feed pressure, optimum, min.	MPa	0.4
Vacuum, max.	-kPa	75
Vacuum, min.	-kPa	60

Performance

Ejector specification	Feed pressure MPa	Air consumption NI/s	Vacuum flow (NI/s) at different vacuum levels (-kPa)								Max vacuum -kPa
			0	10	20	30	40	50	60	70	
piPREMIUM1600	0.4	80	314	174	122	77	51	26	6.4	0	≥60
piPREMIUM1600	0.5	96	334	196	141	90	54	40	22.4	11.5	≥70
piPREMIUM1600	0.6	112	340	212	166	109	58	38	32	22.4	≥75

Dimensional drawings



Values specified in this datasheet are tested at (unless otherwise stated):

- Room temperature (20°C [68°F] ± 3°C [5.5°F]).
- Standard atmosphere (101.3 [29.9 inHg] ± 1.0 kPa [0.3 inHg]).
- Compressed air quality, DIN ISO 8573-1 class 4.

Tolerance and accuracy:

- Feed pressure tolerance ±0.02 MPa [2.9 psi]
- Vacuum flow/evacuation time accuracy ±10%.

Accessories

0201649 | Maintenance kit piFLOW® pumps

0201782 | Regulator kit piFLOW®p 1" 1200-1600 (0104491 x2)

0201786 | Wall mounting kit pump piPREMIUM 1200-1600 (0201025 x2)

piPREMIUM upgrade kit C56-800

Article number: 0201166



- The kit is a plug-and-play assembly for a quick changeover to replace the Maxi L pump and top module
- COAX® patented technology
- Side mounted for low building height
- High vacuum flow
- Compact size and low weight
- Low noise level
- Modular design
- Pneumatic valve for compressed air to shock tank and mounting plate for the C series are included

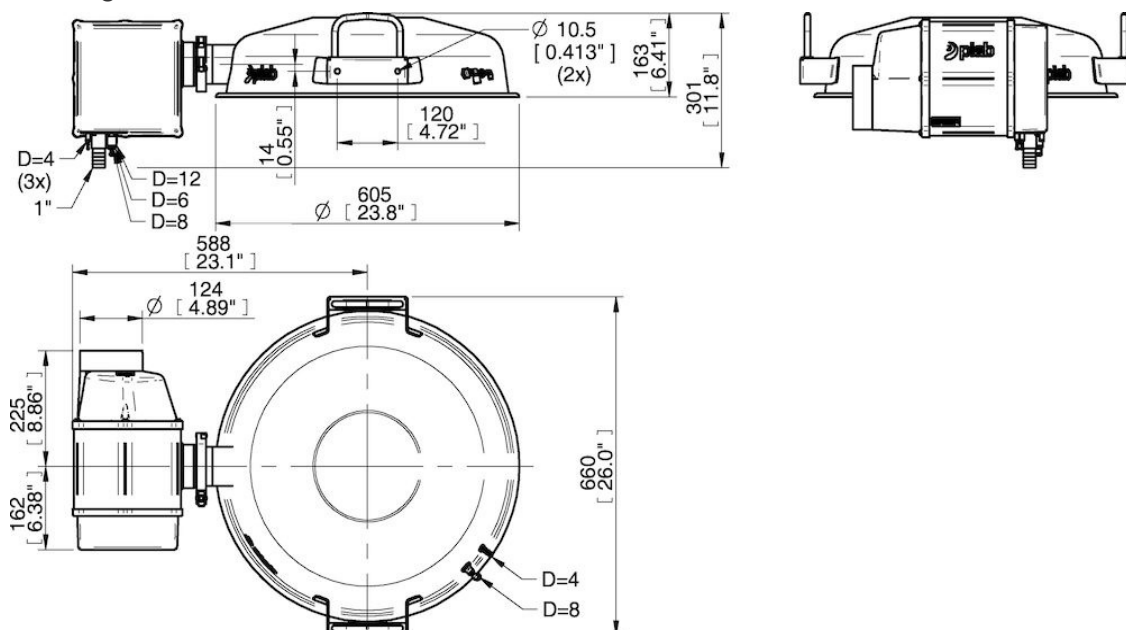
Technical data

Description	Unit	Value
Material	-	Al. ASTM 316L. Nitrile (NBR). PA. PP. SS
Temperature, max.	°C	60
Temperature, min.	°C	0
Weight, min.	g	16000
Feed pressure, max.	MPa	0.7
Noise level, max.	dBA	77
Noise level, min.	dBA	69
Feed pressure, optimum, max.	MPa	0.6
Feed pressure, optimum, min.	MPa	0.4
Vacuum, max.	-kPa	75
Vacuum, min.	-kPa	60

Performance

Ejector specification	Feed pressure MPa	Air consumption Nl/s	Vacuum flow (Nl/s) at different vacuum levels (-kPa)								Max vacuum -kPa
			0	10	20	30	40	50	60	70	
piPREMIUM800	0.4	40	157	87	61	38	26	12.8	3.2	0	≥60
piPREMIUM800	0.5	48	167	98	70	45	27	19.8	11.2	5.8	≥70
piPREMIUM800	0.6	56	170	106	83	54	29	19.2	16	11.2	≥75

Dimensional drawings



Values specified in this datasheet are tested at (unless otherwise stated):

- Room temperature (20°C [68°F] ± 3°C [5.5°F]).
- Standard atmosphere (101.3 [29.9 inHg] ± 1.0 kPa [0.3 inHg]).
- Compressed air quality, DIN ISO 8573-1 class 4.

Tolerance and accuracy:

- Feed pressure tolerance ±0.02 MPa [2.9 psi]
- Vacuum flow/evacuation time accuracy ±10%.

Accessories

0104491 | Regulator kit piFLOW®p 1" 600-800

0201025 | Wall mounting kit pump piPREMIUM 600-800

0201649 | Maintenance kit piFLOW® pumps

Values specified in this datasheet are tested at (unless otherwise stated):

- Room temperature (20°C [68°F] ± 3°C [5.5°F]).
- Standard atmosphere (101.3 [29.9 inHg] ± 1.0 kPa [0.3 inHg]).
- Compressed air quality, DIN ISO 8573-1 class 4.

Tolerance and accuracy:

- Feed pressure tolerance ±0.02 MPa [2.9 psi]
- Vacuum flow/evacuation time accuracy ±10%.

Accessories

0201649 | Maintenance kit piFLOW® pumps

0201782 | Regulator kit piFLOW®p 1" 1200-1600 (0104491 x2)

0201786 | Wall mounting kit pump piPREMIUM 1200-1600 (0201025 x2)

piPREMIUM upgrade kit C56-600

Article number: 0201601



- The kit is a plug-and-play assembly for a quick changeover to replace the Maxi L pump and top module
- COAX® patented technology
- Side mounted for low building height
- High vacuum flow
- Compact size and low weight
- Low noise level
- Modular design
- Pneumatic valve for compressed air to shock tank and mounting plate for the C series are included

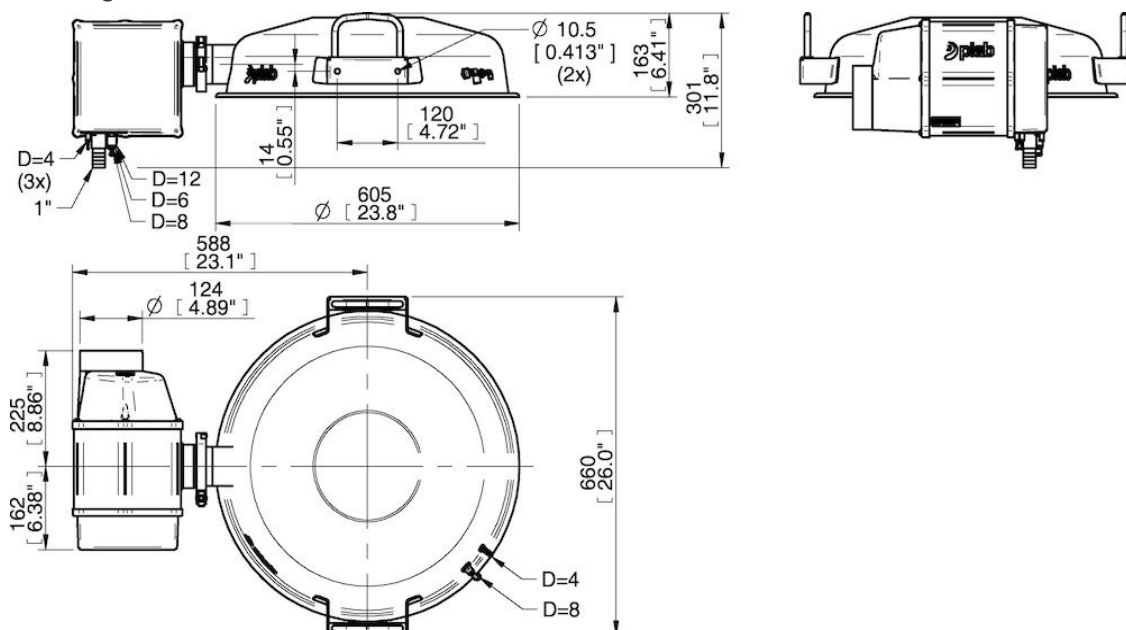
Technical data

Description	Unit	Value
Material	-	Al. ASTM 316L. Nitrile (NBR). PA. PP. SS
Temperature, max.	°C	60
Temperature, min.	°C	0
Weight, min.	g	16000
Feed pressure, max.	MPa	0.7
Noise level, max.	dBA	77
Noise level, min.	dBA	69
Feed pressure, optimum, max.	MPa	0.6
Feed pressure, optimum, min.	MPa	0.4
Vacuum, max.	-kPa	75
Vacuum, min.	-kPa	60

Performance

Ejector specification	Feed pressure MPa	Air consumption Nl/s	Vacuum flow (Nl/s) at different vacuum levels (-kPa)								Max vacuum -kPa
			0	10	20	30	40	50	60	70	
piPREMIUM600	0.4	30	120	70	46	29	19.2	9.6	2.4	0	≥60
piPREMIUM600	0.5	36	137	79	53	34	20.4	14.9	8.4	4.3	≥70
piPREMIUM600	0.6	42	144	84	62	41	21.6	14.4	12	8.4	≥75

Dimensional drawings



Values specified in this datasheet are tested at (unless otherwise stated):

- Room temperature (20°C [68°F] ± 3°C [5.5°F]).
- Standard atmosphere (101.3 [29.9 inHg] ± 1.0 kPa [0.3 inHg]).
- Compressed air quality, DIN ISO 8573-1 class 4.

Tolerance and accuracy:

- Feed pressure tolerance ±0.02 MPa [2.9 psi]
- Vacuum flow/evacuation time accuracy ±10%.

Accessories

0104491 | Regulator kit piFLOW®p 1" 600-800

0201025 | Wall mounting kit pump piPREMIUM 600-800

0201649 | Maintenance kit piFLOW® pumps

BONDY

INDUSTRIAL EQUIPMENT SUPPLIER



Transmission



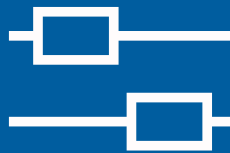
Handling



Motor & Gear



Vacuum Conveying



Linear



Support

See our products and solutions at

www.bondy.dk

For ordering and questions call (+45) 70 15 14 14