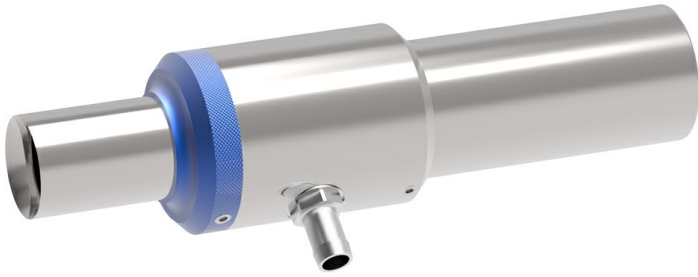


# Ejector 300 Stainless steel, 3108002



- Compact ejector used when a large flow with low vacuum is desired.
- Air consumption and capacity can be adjusted.
- Small amounts of material and contaminants can be conveyed.
- Available in stainless steel or aluminium.
- When fitted with an insert, the ejector changes characteristics providing higher vacuum at lower flow.
- Delivered with a 3/8" hose nipple for the compressed air connection.

## General

Material	Viton®, SS
Temperature	-20 – 150 °C
Weight	2.5 kg

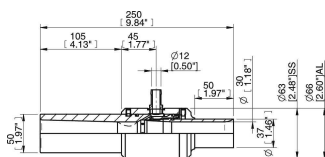
## Performance

Feed pressure	0.1 – 0.6 MPa
Vacuum, max.	12.5 -kPa

## Vacuum flow

COAX® Cartridge	Feed pressure	Air consumption	Vacuum flow (NI/s) at different vacuum levels (-kPa)	
			0	Max vacuum
	MPa	NI/s	0	-kPa
without insert	0.1	8.3	55	3.5
without insert	0.2	13.3	85	6
without insert	0.3	18.3	110	8
without insert	0.4	23.3	126	10.5
without insert	0.5	28.3	141	12
without insert	0.6	33.3	152	12.5
with insert	0.1	8.3	32	5
with insert	0.2	13.3	47	11
with insert	0.3	18.3	59	16
with insert	0.4	23.3	64	20
with insert	0.5	28.3	64	21.5
with insert	0.6	33.3	59	21.8

## Dimensional drawings



## Values specified in the data sheet are tested at:

Room temperature	(20°C [68°F] ± 3°C [5.5°F])
Standard atmosphere	(101.3 [29.9 inHg] ± 1.0 kPa [0.3 inHg])
Relative humidity	0-100%
Compressed air quality	DIN ISO 8573-1 class 4

## Accessories

	Item no.
Insert 200 Stainless steel cpl.	3108004