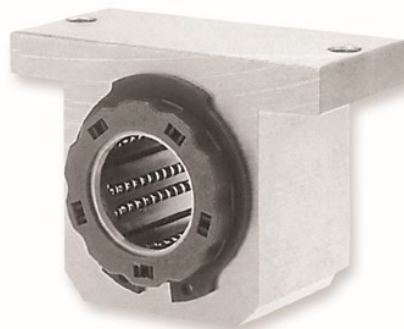
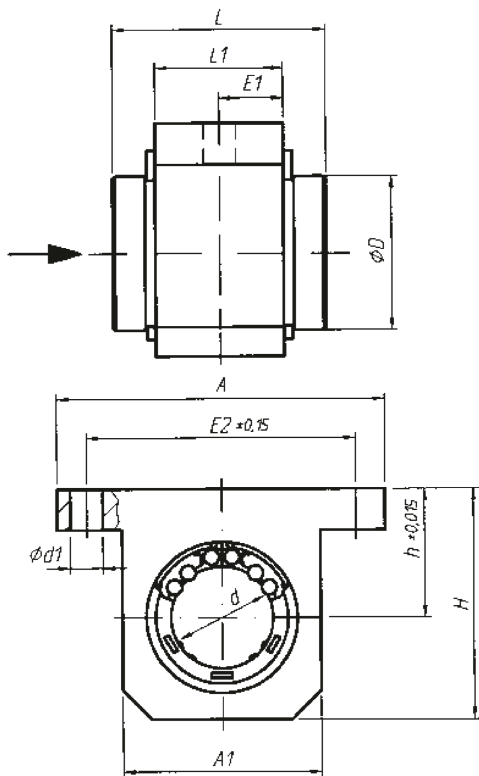


ALGS Linear Housing Unit



standard closed
integrated wipers on both ends

Dimensions in mm

Part-No.	Ø d	Ø D	h	H	A	A1	E1	E2	L	L1	Ø d1	weight (kg)
ALGS-12	12	22	18	35	52	30	10	42	32	20	5,3	0,09
ALGS-16	16	26	22	40,5	56	34	11	46	36	22	5,3	0,12
ALGS-20	20	32	25	48,0	70	40	14	58	45	28	6,4	0,25
ALGS-25	25	40	30	58,0	80	50	20	68	58	40	6,4	0,49
ALGS-30	30	47	35	67,0	88	58	24	76	68	48	6,4	0,78
ALGS-40	40	62	45	85,0	108	74	28	94	80	56	8,4	1,28
ALGS-50	50	75	50	100	135	96	36	116	100	72	10,5	1,70

- Load ratings according to the specification of the bearing
- weight value considering the standard ball bushing
- the bushings are secured in the housings by retaining rings DIN 471
- fixing screws DIN 912 - 8.8, circlip DIN 7980

Ordering code

ALGS-	Ø-	S
linear housing, closed	shaft diameter	<p>S linear ball bushing self-aligning/ high load capacity (refer to page 25)</p> <p>K linear ball bushing standard (refer to page 20)</p> <p>V linear ball bushing all-steel (refer to page 21)</p> <p>KS linear ball bushing standard self-aligning (refer to page 24)</p> <p>FM linear slide bushing, self-lubricating (ref. to p. 27)</p> <p>L linear slide bushing, ceramic</p>