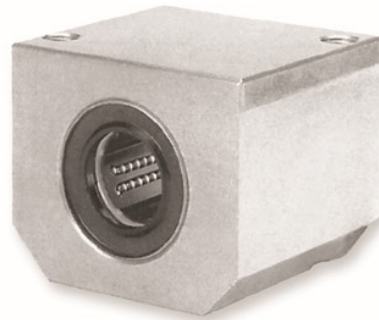
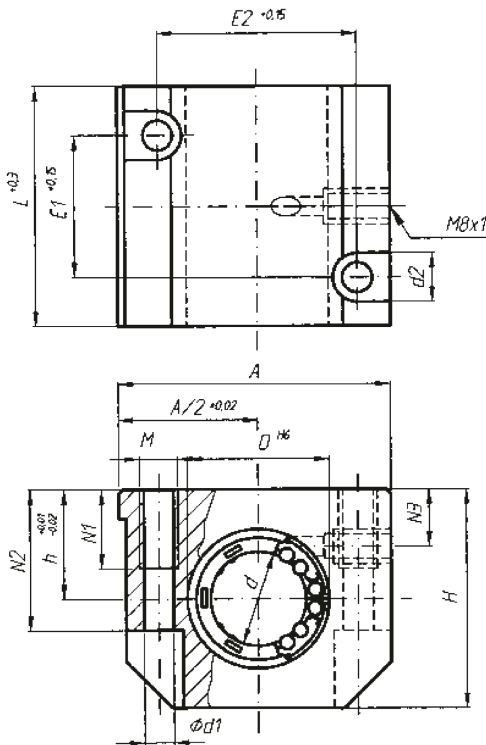


AG Linear Housing Unit



single
integrated wipers on both ends
lubrication hole M8 x1

Linear Bearing Housings

Dimensions in mm

Part-No.	Ø d	Ø D	A	H	h	L	N1	N2	N3	E1	E2	Ø d1	d2	M	weight (kg)
AG-08	8	16	35	28	13	32	10	14	8	20	25	3,3	6	M4	0,07
AG-12	12	22	43	35	18	39	13	25	10	23	32	4,2	8	M5	0,13
AG-16	16	26	53	42	22	43	13	30	12	26	40	5,2	10	M6	0,20
AG-20	20	32	60	50	25	54	18	34	13	32	45	6,8	11	M8	0,34
AG-25	25	40	78	60	30	67	22	40	15	40	60	8,6	15	M10	0,65
AG-30	30	47	87	70	35	79	22	48	16	45	68	8,6	15	M10	0,97
AG-40	40	62	108	90	45	91	26	60	20	58	86	10,3	18	M12	1,80
AG-50	50	75	132	105	50	113	34	49	20	50	108	14,25	20	M16	3,00
AG-60	60	90	178	128	69	142	40	100	-	90	130	17,5	26	M20	
AG-80	80	120	232	186	93	185	48	136	-	110	170	22	33	M24	

- Load ratings according to the specification of the bearing
- weight value considering the standard ball bushing
- the bushings are secured in the housings by retaining rings DIN 472
- fixing screws DIN 912 - 8.8, circlip DIN 7980

Ordering code

AG-	Ø-	S-	V
single linear housing unit, single, closed	shaft diameter	S linear ball bushing, self-aligning, high load capacity (refer to page 25) K linear ball bushing, standard (refer to p. 20) V linear ball bushing, all-steel (refer to page 21) KS linear ball bushing, standard, self-aligning (refer to page 24) FM linear slide bushing, self-lubricating (ref. to p. 27) L linear slide bushing, ceramic	external front seal