

Bellows suction cup S.B26SF50.XXX.00



- ▶ The lifting movement can be used to separate small and thin objects.
- ▶ Only lightweight objects should be handled when the lifting force is parallel to the surface of the object, in order to achieve good precision and safe lifting movement.
- ▶ Suitable for level adjustment. Several short bellows in one lifting device can handle objects with height differences and varying shapes, for example embossed or corrugated plates.
- ▶ The silicone material complies with FDA 21 CFR 177.2600 & EU 1935/2004.

Lifting force

Description	Vertical			Parallel		
	20 -kPa	60 -kPa	90 -kPa	20 -kPa	60 -kPa	90 -kPa
Lifting forces	8.3 N	16.5 N	19.3 N	8.7 N	13.6 N	16.7 N

Technical data

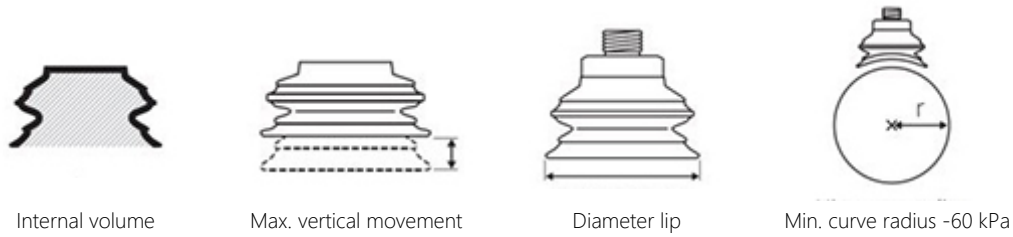
Description	Unit	Value
Internal volume	cm ³	3.9
Weight	g	3
Min. curve radius -60 kPa	mm	12.0
Max. vertical movement	mm	11.6
Application	-	Food contact materials (FDA & EU), non-detectable,
Material	-	Silicone (SIL FDA)
Colour	-	Transparent
Suction cup model	-	B
Suction cup shape	-	Bellows
Hardness °Shore A	-	50 °Shore A
Temperature range (°C)	°C	-40 – 200
Actuated outer diameter, Max	mm	28.9

Material resistance , Silicone FDA, SIL FDA

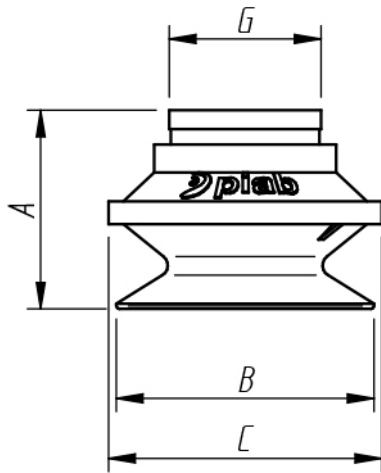
Description	Value
Alcohol	Good
Concentrated Acids	Poor
Ethanol	N/A
Hydrolysis	Fair
Methanol	N/A
Oil	Poor
Oxidation	Excellent
Petrol	Poor
Wear Resistance	Good
Weather & Ozone	Excellent

Values specified in data sheet are tested at:

- Room temperature (20°C [68°F] ± 3°C [5.5°F]).
- Standard atmosphere (101.3 [29.9 inHg] ± 1.0 kPa [0.3 inHg]).
- Relative humidity 20-70%.
- Compressed air quality, DIN ISO 8573-1 class 4.



Dimensional drawing



Product code	Description	Unit	Value
A	Building height	mm [inch]	23.9 [0.94"]
B	Diameter lip	mm [inch]	26.0 [1.02"]
C	Diameter (bellow)	mm [inch]	26.7 [1.05"]
G	Diameter (upper part cup)	mm [inch]	15.0 [0.59"]

Ordering information

Description	Product code
Bellows suction cup , Ø 26mm, Silicone FDA, SIL FDA, 50 °Shore A, None, None, None, None	S.B26SF50.XXX.00

Ordering information, spare parts

Description	Art. No.
Suction cup B26 Silicone FCM	0212601

Ordering information, accessories

Description	Art. No.
Fitting M5 female	3250003
Fitting M5 female, with dual flow control valve	3251001
Fitting G1/8" male, with mesh filter	3250085
Fitting G1/8" male, check valve	3251002
Fitting G1/8" male/M5 female, with mesh filter	0101152
Fitting G1/8" male/M5 female, with dual flow control valve	3251004
Fitting G1/8" male/M5 female, with cone valve	0101155
Fitting G1/8" male/M5 female, PA	3150196
Fitting 5xM5 female	0100260
Fitting 5xM5 female, with dual flow control valve	3251005
Fitting 1/8" NPT male, with dual flow control valve	3251003
Fitting 1/8" NPT male, with mesh filter	3250088
Fitting G1/8" male/M5 female	3250004
Suction cup B26 HNBR	0212602
Suction cup B26 Chloroprene	0212603
Suction cup B26 Silicone	0212600