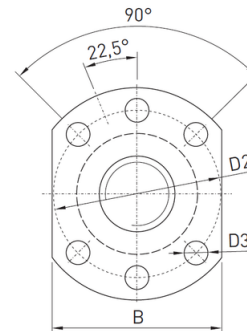
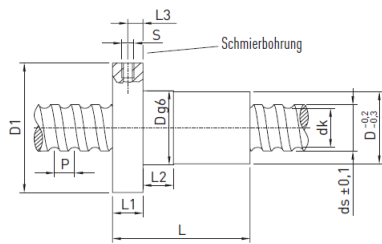


Nut designation R16-10K3-FSCDIN



Configuration attributes: 2R16-10K3-FSCDIN-3000-3000-0,052

type of spindle		rolled
nominal diameter in mm		16
lead		10
path deviation in µm		52 µm/ 300 mm
Nut assembly		With axial play 0,04 mm assembled

Nut designation R16-10K3-FSCDIN / Spindle designation R16-10N-3000-3000-0,052

Spindle diameter	<b>ds</b>	14,7	mm
lead	<b>P</b>	10	mm
Nut diameter	<b>D<sub>g6</sub></b>	28	mm
External flange diameter	<b>D1</b>	48	mm
Centring diameter	<b>D2</b>	38	mm
Hole diameter	<b>D3</b>	5,5	mm
Hole pattern		1	
Nut length	<b>L</b>	45	mm
Flange width	<b>L1</b>	10	mm
Fit length	<b>L2</b>	10	mm
Lubrication hole distance	<b>L3</b>	5	mm
Lubrication hole	<b>S</b>	M6	mm
Flange width	<b>B</b>	40	mm
Core diameter	<b>dk</b>	12,5	mm
Dynamic load rating	<b>C<sub>dyn</sub></b>	9.100	N
Static load rating	<b>C<sub>0</sub></b>	19.300	N
Axial play		0,04	mm
Mass		0,2	kg/St.

Specifications for your order:

2R16-10K3-FSCDIN-3000-3000-0,052

E1: -

E2: -