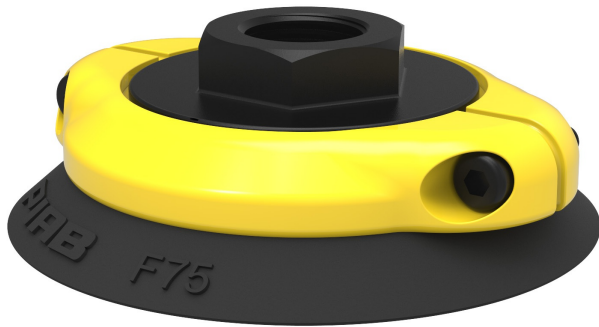


Suction cup F75 Nitrile-PVC, G3/8" female, with cone valve , 0101877

- Suitable for flat objects.
- Good stability and little inherent movement.
- Recommended when the lifting force is parallel to the surface of the object.
- Cleats prevent thin, sensitive objects from being deformed and gives extra friction when the lifting force is parallel.



General

Curve radius	150 mm
Movement, vertical max.	3 mm
Application	Dry sheet metal
Material	Nitrile-PVC (NPV)
Suction cup model	F
Suction cup shape	Flat
Volume	20 cm ³
Weight	23 g

Fitting

Fitting size	3/8"
Fitting style	Female
Fitting type	G-thread
Fitting option	Cone valve

Dimension

Outer diameter, actuated	79 mm
--------------------------	-------

Performance — lifting forces

		
20 -kPa	80 N	60 N
60 -kPa	200 N	110 N
90 -kPa	270 N	140 N

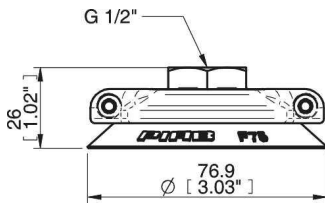
Material

	Nitrile-PVC (NPV)
Colour	Black
Hardness	50 °Shore A
Temperature	0 – 90 °C

Material resistance

	Nitrile-PVC (NPV)
Alcohol	++
Concentrated acids	+
Ethanol	N/A
Hydrolysis	++
Methanol	N/A
Oil	+++
Oxidation	++
Petrol	+++
Wear resistance	+++
Weather and ozone	++

Dimensional drawings



Values specified in the data sheet are tested at:

Room temperature	(20°C [68°F] ± 3°C [5.5°F])
Standard atmosphere	(101.3 [29.9 inHg] ± 1.0 kPa [0.3 inHg])
Relative humidity	0-100%
Compressed air quality	DIN ISO 8573-1 class 4

Spare parts

	Item no.
Suction cup F75 Nitrile-PVC	3150131P
Fitting 75, G3/8" female, with cone valve	0100552

Accessories

	Item no.
Suction cup F75 Silicone	3150131S
Suction cup F75 HNBR	3150131T
Fitting G1/2" female Al, with mesh filter	0127820
Fitting 75, G3/8" female, with mesh filter	0100551
Fitting 75, G1/2" female, with mesh filter	0100555
Fitting 75, G1/2" female, with cone valve	0100556
Fitting 75, 3/8" NPSF female, with mesh filter	0100553
Fitting 75, 1/8" NPSF female, with mesh filter	0100548
Fitting 1/8" NPSF female Al, with mesh filter	0127819
Fitting 1/4" NPT female Al, with mesh filter & 10-32 addl. conn.	0127821