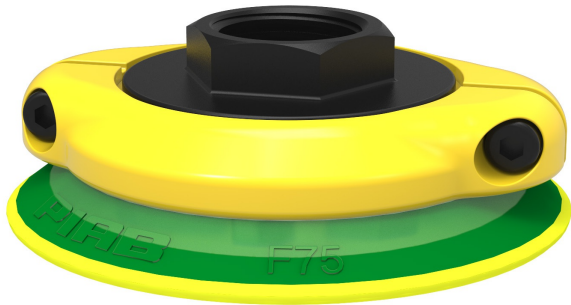


# Suction cup F75P Polyurethane 30/60, G1/2" female, with mesh filter, 0106352



- Suitable for flat and rough surfaces.
- Fair stability and little inherent movement.
- Recommended when the lifting force is parallel to the surface of the object.
- In the two-coloured suction cup the bellows and the sealing lip are of different hardnesses, which makes the suction cup strong and stable and, at the same time, soft and flexible.
- DURAFLEX® suction cups manufactured in a specially developed material that features the elasticity of rubber and wear resistance of polyurethane. The material does not leave any marks on the objects handled.

## General

|                         |  |
|-------------------------|--|
| Curve radius            | 150 mm                                   |
| Movement, vertical max. | 2 mm                                     |
| Application             | Mark Free, Dry sheet metal               |
| Material                | Polyurethane (PU30), Polyurethane (PU60) |
| Suction cup model       | F  |
| Suction cup shape       | Flat                                     |
| Volume                  | 19 cm <sup>3</sup>                       |
| Weight                  | 28 g                                     |

## Fitting

|                |             |
|----------------|-------------|
| Fitting size   | 1/2"        |
| Fitting style  | Female      |
| Fitting type   | G-thread    |
| Fitting option | Filter mesh |

## Dimension

|                          |       |
|--------------------------|-------|
| Height                   | 26 mm |
| Outer diameter           | 77 mm |
| Outer diameter, actuated | 80 mm |

## Performance — lifting forces

|         |  |  |
|---------|---|---|
| 20 -kPa | 70 N  | 44 N  |
| 60 -kPa | 193 N   | 176 N   |
| 90 -kPa | 273 N   | 308 N   |

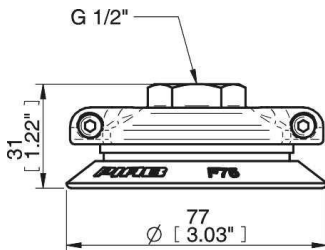
## Material

|             | Polyurethane (PU30) | Polyurethane (PU60) |
|-------------|---------------------|---------------------|
| Colour      | Yellow              | Green transparent   |
| Hardness    | 30 °Shore A         | 60 °Shore A         |
| Temperature | 10 – 50 °C          | 10 – 50 °C          |

## Material resistance

|                    | Polyurethane (PU30) | Polyurethane (PU60) |
|--------------------|---------------------|---------------------|
| Alcohol            | N/A                 | N/A                 |
| Concentrated acids | +                   | +                   |
| Ethanol            | +                   | +                   |
| Hydrolysis         | +                   | +                   |
| Methanol           | -                   | -                   |
| Oil                | +++                 | +++                 |
| Oxidation          | -                   | -                   |
| Petrol             | +                   | +                   |
| Wear resistance    | +++                 | +++                 |
| Weather and ozone  | +++                 | +++                 |

## Dimensional drawings



## Values specified in the data sheet are tested at:

|                        |  |
|------------------------|--|
| Room temperature       | (20°C [68°F] ± 3°C [5.5°F])              |
| Standard atmosphere    | (101.3 [29.9 inHg] ± 1.0 kPa [0.3 inHg]) |
| Relative humidity      | 0-100%                                   |
| Compressed air quality | DIN ISO 8573-1 class 4                   |

## Spare parts

|  | Item no. |
|--|----------|
| Suction cup F75P Polyurethane 30/60        | 0104724  |
| Fitting 75, G1/2" female, with mesh filter | 0100555  |
| Cone Valve for Fitting 75                  | 0100729  |

## Accessories

|  | Item no. |
|--|----------|
| Thread insert G3/8" male, with O-ring and mesh filter  | 0107148  |
| Suction cup F75P Polyurethane 60, for thread insert    | 0107320  |
| Suction cup F75P Polyurethane 60                       | 0111584  |
| Suction cup F75P Polyurethane 30/60, for thread insert | 0106829  |
| Fitting 75, G3/8" female, with mesh filter             | 0100551  |
| Fitting 75, G3/8" female, with cone valve              | 0100552  |
| Fitting 75, 3/8" NPSF female, with mesh filter         | 0100553  |
| Fitting 75, 1/8" NPSF female, with mesh filter         | 0100548  |