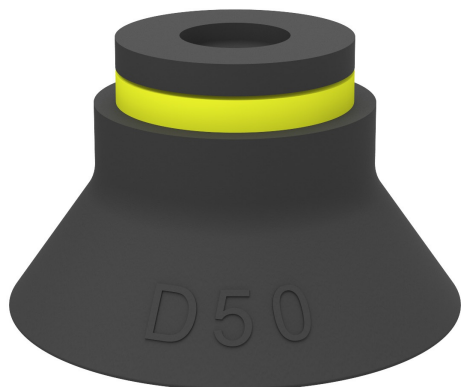


# Suction cup D50 Chloroprene, 0101127

- Suitable for objects with curved or irregular surfaces.
- Grips around corners and edges.



## General

Curve radius	25 mm
Movement, vertical max.	8 mm
Application	Plastic injection molded parts, Dry sheet metal
Material	Chloroprene (CR)
Suction cup model	D
Suction cup shape	Deep
Volume	15 cm <sup>3</sup>
Weight	18 g

## Fitting

Fitting size	None
Fitting style	None
Fitting type	None
Fitting option	None

## Dimension

Height	31.5 mm
Outer diameter	53 mm

## Performance — lifting forces

		
20 -kPa	36 N	29.9 N
60 -kPa	78 N	42.6 N
90 -kPa	98 N	47.4 N

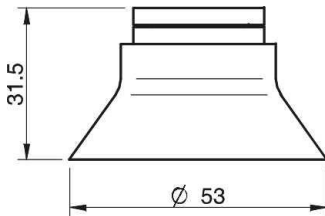
## Material

	Chloroprene (CR)
Colour	Black
Hardness	50 °Shore A
Temperature	-40 – 110 °C

## Material resistance

	Chloroprene (CR)
Alcohol	++
Concentrated acids	-
Ethanol	N/A
Hydrolysis	++
Methanol	N/A
Oil	+
Oxidation	++
Petrol	+
Wear resistance	+++
Weather and ozone	++

## Dimensional drawings



## Values specified in the data sheet are tested at:

Room temperature	(20°C [68°F] ± 3°C [5.5°F])
Standard atmosphere	(101.3 [29.9 inHg] ± 1.0 kPa [0.3 inHg])
Relative humidity	0-100%
Compressed air quality	DIN ISO 8573-1 class 4

## Accessories

	Item no.
Fitting 1/8" NPSF female, 50	3250017
Fitting G1/4" male, 50, with mesh filter	3250092
Fitting 1/4" NPT male, with mesh filter	3250094
Fitting G3/8" male, 50, with mesh filter	3250087
Fitting 3/8" NPT male, with mesh filter	3250090
Fitting 5x1/8" NPSF female, 50	0100262
Fitting 1/8" NPSF female, 50, with mesh filter	0101154
Fitting G1/8" male, 50, with mesh filter	0200715
Fitting 1/8" NPSF female, 50, PA	3150198
Fitting 1/8" NPSF female, 50, with dual flow control valve	3251012
Fitting G1/4" male, with mesh filter and dual flow control valve	3251013
Fitting 1/4" NPT male, with dual flow control valve	3251014
Fitting G3/8" male, 50, with mesh filter and dual flow control valve	3251015
Fitting 3/8" NPT male, with dual flow control valve	3251016
Fitting 5x1/8" NPSF female, 50, with dual flow control valve	3251017