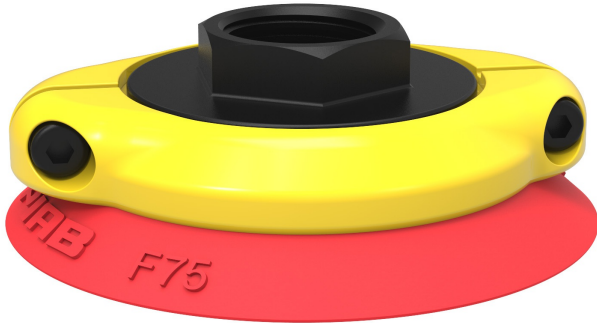


# Suction cup F75 Silicone, G1/2" female, with cone valve, 0101872

- Suitable for flat objects.
- Good stability and little inherent movement.
- Recommended when the lifting force is parallel to the surface of the object.
- Cleats prevent thin, sensitive objects from being deformed and gives extra friction when the lifting force is parallel.



## General

Curve radius	150 mm
Movement, vertical max.	3 mm
Application	Dry sheet metal
Material	Silicone (SIL)
Suction cup model	F
Suction cup shape	Flat
Volume	20 cm <sup>3</sup>
Weight	23 g

## Fitting

Fitting size	1/2"
Fitting style	Female
Fitting type	G-thread
Fitting option	Cone valve

## Dimension

Outer diameter, actuated	79 mm
--------------------------	-------

## Performance — lifting forces

		
20 -kPa	80 N	60 N
60 -kPa	200 N	110 N
90 -kPa	270 N	140 N

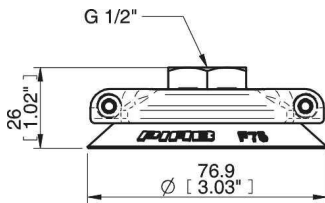
## Material

	Silicone (SIL)
Colour	Red
Hardness	50 °Shore A
Temperature	-40 – 200 °C

## Material resistance

	Silicone (SIL)
Alcohol	++
Concentrated acids	-
Ethanol	N/A
Hydrolysis	+
Methanol	N/A
Oil	-
Oxidation	+++
Petrol	-
Wear resistance	++
Weather and ozone	+++

## Dimensional drawings



## Values specified in the data sheet are tested at:

Room temperature	(20°C [68°F] ± 3°C [5.5°F])
Standard atmosphere	(101.3 [29.9 inHg] ± 1.0 kPa [0.3 inHg])
Relative humidity	0-100%
Compressed air quality	DIN ISO 8573-1 class 4

## Spare parts

	Item no.
Suction cup F75 Silicone	3150131S
Fitting 75, G1/2" female, with cone valve	0100556
Cone Valve for Fitting 75	0100729

## Accessories

	Item no.
Suction cup F75 Nitrile-PVC	3150131P
Suction cup F75 HNBR	3150131T
Fitting 75, G3/8" female, with mesh filter	0100551
Fitting 75, G3/8" female, with cone valve	0100552
Fitting 75, G1/2" female, with mesh filter	0100555
Fitting 75, 3/8" NPSF female, with mesh filter	0100553
Fitting 75, 1/8" NPSF female, with mesh filter	0100548