

Suction cup F150 Nitrile-PVC, G1/2" female Al, with mesh filter , F150.30.15UA

- Suitable for flat objects.
- Good stability and little inherent movement.
- Recommended when the lifting force is parallel to the surface of the object.
- Cleats prevent thin, sensitive objects from being deformed and gives extra friction when the lifting force is parallel.



General

Curve radius	19.7 in
Movement, vertical max.	0.24 in
Application	Dry sheet metal
Material	Nitrile-PVC (NPV)
Suction cup model	F
Suction cup shape	Flat
Volume	9.8 in ³
Weight	7.05 oz

Fitting

Fitting size	1/2"
Fitting style	Female
Fitting type	G-thread
Fitting option	Filter mesh

Dimension

Height	1.43 in
Outer diameter	5.98 in

Performance — lifting forces

		
6 -inHg	67.4 lbf	56.2 lbf
18 -inHg	191 lbf	135 lbf
27 -inHg	247 lbf	180 lbf

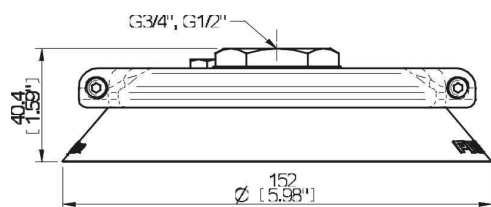
Material

	Nitrile-PVC (NPV)
Color	Black
Hardness	50 °Shore A
Temperature	32 – 194 °F

Material resistance

	Nitrile-PVC (NPV)
Alcohol	++
Concentrated acids	+
Ethanol	N/A
Hydrolysis	++
Methanol	N/A
Oil	+++
Oxidation	++
Gasoline	+++
Wear resistance	+++
Weather and ozone	++

Dimensional drawings



Values specified in the data sheet are tested at:

Room temperature	(20°C [68°F] ± 3°C [5.5°F])
Standard atmosphere	(101.3 [29.9 inHg] ± 1.0 kPa [0.3 inHg])
Relative humidity	0-100%
Compressed air quality	DIN ISO 8573-1 class 4

Spare parts

	Part no.
Suction cup F150 Nitrile-PVC	F150.30
Fitting G1/2" female Al, with mesh filter	15UA

Accessories

	Part no.
Suction cup F150 Nitrile-PVC with washer	F150.30.W
Suction cup F150 Silicone with washer	F150.20.W
Suction cup F150 Silicone	F150.20
Fitting 150, G1/2" female, with mesh filter	15NA
Fitting 150, G1/2" female, clamp ring with cone valve	15VA
Fitting 150, G3/4" female, with mesh filter	15NB