

Suction cup F15 Chloroprene, M5 male, 3150014



- Suitable for flat objects.
- Good stability and little inherent movement.
- Recommended when the lifting force is parallel to the surface of the object.
- Cleats prevent thin, sensitive objects from being deformed and gives extra friction when the lifting force is parallel.

General

Curve radius	13 mm
Movement, vertical max.	1 mm
Application	Dry sheet metal
Material	Chloroprene (CR)
Suction cup model	F
Suction cup shape	Flat
Volume	0.37 cm ³
Weight	0.9 g

Fitting

Fitting size	None, M5
Fitting style	Male
Fitting type	M-thread
Fitting option	None

Dimension

Height	19.5 mm
Outer diameter	15.7 mm
Outer diameter, actuated	16.1 mm

Performance — lifting forces

		
20 -kPa	3.5 N	3.5 N
60 -kPa	8.5 N	6.5 N
90 -kPa	11 N	7.5 N

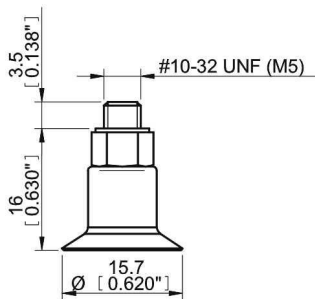
Material

	Chloroprene (CR)
Colour	Black
Hardness	50 °Shore A
Temperature	-40 – 110 °C

Material resistance

	Chloroprene (CR)
Alcohol	++
Concentrated acids	-
Ethanol	N/A
Hydrolysis	++
Methanol	N/A
Oil	+
Oxidation	++
Petrol	+
Wear resistance	+++
Weather and ozone	++

Dimensional drawings



Values specified in the data sheet are tested at:

Room temperature	(20°C [68°F] ± 3°C [5.5°F])
Standard atmosphere	(101.3 [29.9 inHg] ± 1.0 kPa [0.3 inHg])
Relative humidity	0-100%
Compressed air quality	DIN ISO 8573-1 class 4

Spare parts

	Item no.
Suction cup F15 Chloroprene	3150125
Fitting M5 male, 10-15	3107030

Accessories

	Item no.
Suction cup F15 Silicone	3150125S